



College of
LAW

CATEGORY 1
UNIVERSITY
OF HIGHER EDUCATION
OF INDIA

KL ACCREDITED BY
NAAC WITH A++
GRADE

nirf
2022

NATIONAL
INSTITUTIONAL
FRAMEWORK

RANKED 27
AMONG ALL
UNIVERSITIES

43 YEARS OF
EDUCATIONAL
LEADERSHIP

Offered programs

BBA LL.B.

(5 yrs integrated Professional Degree)

Ph.D (Part -Time)

100%
Placements

Bar Council of India's approved

**STUDENT MENTORING
AT KLEF COLLEGE OF LAW**

- ✔ Psychological
- ✔ Academic
- ✔ Career

CAREER ADVANCEMENT

- ✔ Profession
by choice

**ADMISSION
OPEN 2023-24**

Student Centric education policy of KLEF College of Law:



- ✔ Balancing IQ, EQ and SQ
- ✔ Logical Reasoning
- ✔ Experiential Learning
- ✔ Research based learning
- ✔ Identification of Talent (Aptitude analysis)
- ✔ Campus recruitment training (customised to the student's talent and aspiration)

Curriculum Design:

- ✔ Business Administration related subjects, as approved by BCI will be delivered to the students along with the students of core program (BBA) and the same is upgraded with various components of technology like AI, Blockchain etc.
- ✔ Law courses are re-structured and upgraded with various components of technology like AI, Blockchain (Case studies under land laws like 'Dharani portal' of Telangana State, Data Science (Python, Empirical study of various components of Law), Cyber Security etc.



For Information Contact

Director Admissions: 949 036 1111

HoD: 996 323 3782



COMMUNICATION SKILLS

- Legal professional Communication Skills
- ✓ General English
- ✓ Sociology

BCI PRESCRIBED MANDATORY COURSES

- ✓ Welfare legislations
- ✓ Family laws
- ✓ Private & Public International laws
- ✓ land laws
- ✓ Procedural Laws like CPC, CrPC etc.
- ✓ Constitution of India
- ✓ labour laws
- ✓ Environmental laws
- ✓ Legal Systems and Interpretation of Statutes

PROFESSIONAL ELECTIVES TOWARDS CAREER DEVELOPMENT

- Professional Electives
- ✓ Seminar papers (3)
- ✓ Moot Court Trainings (4)
- ✓ Summer Internships (4)
- ✓ Soft skills (2)

MANDATORY CERTIFICATIONS

- ✓ Value Added Courses
- ✓ Commercial Contract Management
- ✓ Insolvency and bankruptcy Law

TECHNOLOGY INTEGRATED, BCI PRESCRIBED COURSES

- Business legislations
- ✓ law of Contracts
- ✓ Consumer laws
- ✓ Law of Banking including NI Act
- ✓ Company Law including SEBI
- ✓ Intellectual property laws
- ✓ Information technology law etc.

BCI & KLEF PRESCRIBED MANDATORY COURSES

- Clinical Courses
- ✓ Moot Courts
- ✓ Professional Ethics
- ✓ Experiential learning and access to Justice
- ✓ Drftg of pleadings & Deeds like Sale deed etc.
- ✓ Arbitration & Conciliation law

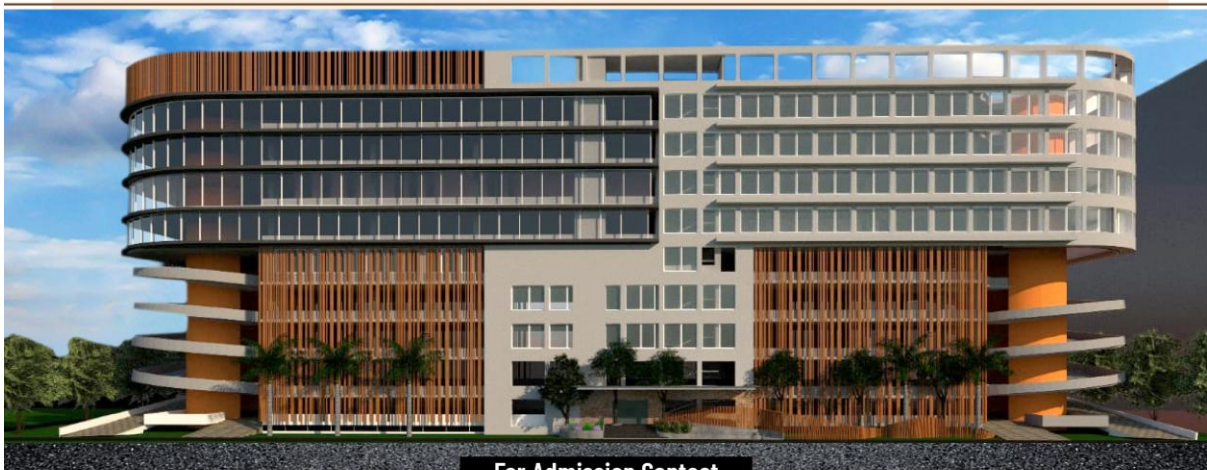
VALUE ADDED COURSES FROM KLEF COLLEGE OF LAW

- Open electives
- ✓ Public Administration / Psychology
- ✓ International Human Rights law / Competition law
- ✓ Media law and RTI Act / International Trade & Investment law



Career options:

- ✓ Judicial officer (Trial Court to Supreme Court)
- ✓ Judicial Clerk (Rs. 80000/- P/M initial pay)
- ✓ Legal officer (various Organizations including Central and State Government bodies, Law Commission, Banks, Construction industry, MNC's etc.,)
- ✓ Arbitrator / Mediator / Conciliator (independently or LLP or with legal services Authority)
- ✓ Advocate
- ✓ Contract Manager (Commercial, smart, Digital etc.,)
- ✓ Intellectual property practitioners
- ✓ Tax (Direct / Indirect) practitioners / Consultants.
- ✓ Researcher to become Law Reformer



For Admission Contact

G. Vijaya Sudha

Assistant Professor HOD - KLEF College of Law
K L University, Andhra Pradesh, India
Intercom no: 1177

For Information Contact

Director Admissions: 949 036 1111 HoD: 996 323 3782