



(DEEMED TO BE UNIVERSITY)

KL

CATEGORY 1 UNIVERSITY
BY MHRD, Govt. of India

KL ACCREDITED BY NAAC WITH A++ GRADE

nirf NATIONAL INSTITUTIONAL RANKING FRAMEWORK
2024

RANKED 22 AMONG ALL UNIVERSITIES

45 YEARS OF EDUCATIONAL LEADERSHIP



CENTRAL LIBRARY

ABOUT KLEF



The Koneru Lakshmaiah Education Foundation was established as a trust in the year 1980 with its official address at Museum Road, Governor pet, Vijayawada, Andhra Pradesh 520 302 and started KL College of Engineering in the Academic year 1980-81. KL Deemed to be University was established in 1980-81, as KL College of Engineering, which was upgraded to KL College of Engineering Autonomous in 2006 by UGC, and was declared as Deemed to be University in 2009 by UGC, MHRD Govt of India In 2012 as the institution was accredited by NAAC with "A" Grade and later in 2018 was reaccredited by NAAC with A++ Grade. In 2019 UGC, MHRD declared this institution as Category "1" Institution.

LOCATION

K L Deemed to be University is situated in a spacious 100-acre campus on the banks of Buckingham Canal of River Krishna, Green Fields, Vaddeswaram, 8 kilometers from Vijayawada City.

ABOUT THE CENTRAL LIBRARY



- The Central Library building is constructed in a centrally located with beautifully designed as a green building having 2700 seating capacity with natural sunlight inside the library.
- The library is centralized air conditioning with modern seating facility for providing the users comfortable atmosphere for their reading and learning.
- The central library is fully computerized using Koha Software version 24 to its in-house operations, with barcode and RFID technologies for automatic self-issue / returns, access control and stock verification of library holdings.
- The Central Library at KLEF, with its fully automated operations, offers a remote access facility, enabling the user community to effortlessly access a wide range of electronic resources.



👁 **VISION**

To be a globally renowned university.


🎯 **MISSION**

To impart quality higher education and to undertake research and extension with emphasis on application and innovation that cater to the emerging societal needs through all-round development of the students of all sections enabling them to be globally competitive and socially responsible citizens with intrinsic values.

SOFTWARE'S IN THE CENTRAL LIBRARY

- ◇ Koha
- ◇ Radio Frequency Identification (RFID)
- ◇ Pearl (Jaws)
- ◇ End Note
- ◇ Turnitin
- ◇ Drillbit
- ◇ SCISPACE
- ◇ Dspace

LIBRARY INFRASTRUCTURE

- Total Area – 8,334 sq. m
 - College Libraries – 4
 - Off Campus Libraries – 2
 - The Central library facilitates group discussion rooms, study rooms, conference hall and open reading area.
- 

LIBRARY AUTOMATION AND RFID TECHNOLOGY IN THE CENTRAL LIBRARY, KLEF

FLAP BARRIERS



Flap barriers have sensors that work with biometric devices such as swipe cards recognition. The barriers open automatically to allow student/staff to walk through after they submit their biometrics. It ensures that only authorized individuals can access the library. They close again after one person passes and the next person must submit their biometrics.

LIBRARY AUTOMATION AND RFID TECHNOLOGY IN THE CENTRAL LIBRARY, KLEF

Online Public Access Catalog (OPAC)



Web **OPAC** is an internet-based catalog system that allows users to access a library's catalog through a web browser which is accessible from anywhere with an internet connection, offering users the flexibility to search and interact with the library's collection remotely at KLEF, the Web OPAC system would enable students, faculty, and researchers.

LIBRARY AUTOMATION AND RFID TECHNOLOGY IN THE CENTRAL LIBRARY, KLEF

SELF-CHECKOUT KIOSK



Self-checkout kiosk machine allows students and staff in the central library to borrow library materials independently by scanning their ID cards, placing items on a designated area, and using a barcode scanner or RFID reader to identify the books, which then updates their account in the library system.

LIBRARY AUTOMATION AND RFID TECHNOLOGY IN THE CENTRAL LIBRARY, KLEF

SELF-CHECKIN KIOSK



The user places the book on the kiosk's designated area and scans the book's barcode using the built-in scanner. This action identifies the book in the library system.

Once the book is scanned, the kiosk automatically updates the library database to mark the book as returned. It may also provide a receipt as confirmation.

RADIO FREQUENCY IDENTIFICATION (RFID) TAGGING



TAGGING

The RFID tag in the central library is to help track and manage library materials. It allows for quick checkouts, returns, and inventory by using radio waves to automatically identify and scan books or items. RFID tags also help improve security by detecting unauthorized removal of items

BOOK BARCODE GENERATOR

BOOK BARCODE GENERATOR IN THE CENTRAL LIBRARY IS USED TO CREATE UNIQUE BARCODE FOR NEW BOOK.



LIBRARY AUTOMATION AND RFID TECHNOLOGY IN THE CENTRAL LIBRARY, KLEF

RFID GATE



Central library services are fully automated with Library Management System Software (KOHA-24) and RFID Technology.

- As the Book barrower leaves the library, the RFID Security Gate scans their items equipped with RFID tags.
- If an unauthorized book is detected, the gate triggers an alarm to prevent unauthorized removal.

COLLEGE OF LAW



College of Law library is in the SDC Building in 6th floor has a collection of more than 3088 physical volumes of books and 924 titles.

COLLEGE OF PHARMACY



The college of pharmacy library is located in the R&D building in 5th Floor in adequate space as per the norms of Pharmacy Council of India (PCI). The library has a floor area of 150 sq.mt and it has a collection of more than 4763 volumes of books and 823 titles.

COLLEGE OF ARCHITECTURE



The Library in the College of Architecture is located in the Architecture Block 2nd Floor with adequate space as per the norms specified by the Council of Architecture (COA)

It has a floor area of 150 sq.mt and a collection of more than 2708 volumes of books and 943 titles.

COLLEGE OF AGRICULTURE



The library in the College of Agriculture is located in the SDC Building in 4th floor in 150sq.mt area and is enriched with 373 titles and 3097 volumes

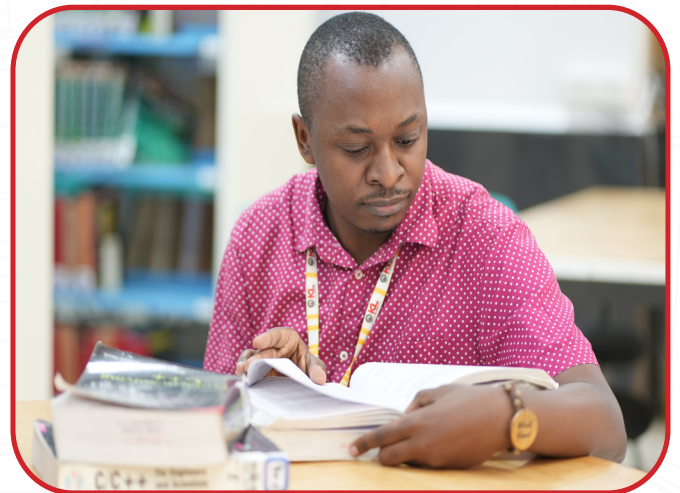


OFF CAMPUS LIBRARIES HYDERABAD

AZIZ NAGAR



BOWRAMPET



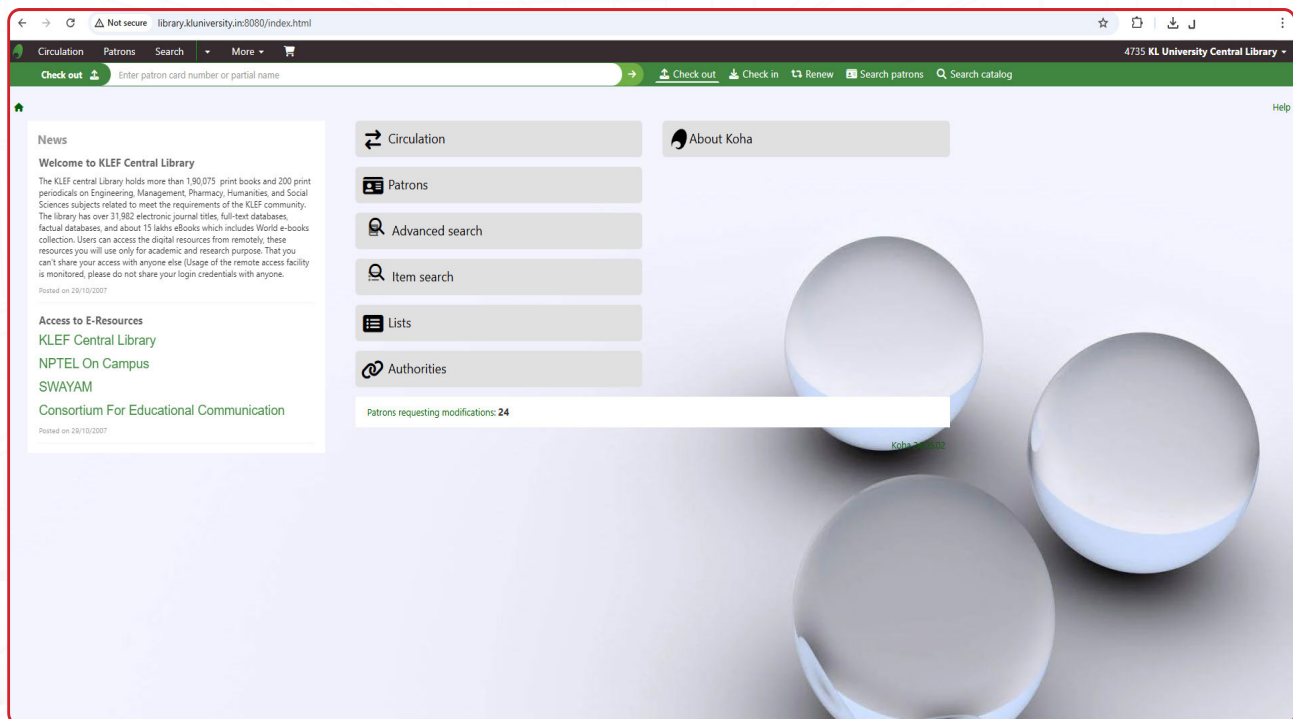
The KLEF has established two Off campuses in Aziz nagar and Bowrampet, in Hyderabad where in well facilitated separate libraries are started with an aim to explore the quality education.



FACILITIES PROVIDED IN THE LIBRARIES

- » Ramp and Wheelchair Access for Persons with Disabilities
- » Center for Visually Impaired Individuals and Divyangjan
- » Discussion & Study Rooms
- » Emergency Exit's
- » Fire Extinguishers
- » Lift Facility
- » RO Drinking Water
- » Library Automation with RFID Technology
- » Proactive services with RFID Technology
- » Library Portal
- » Wi-Fi connection with high-speed internet
- » CC TV Surveillance

AUTOMATION IN THE CENTRAL LIBRARY



VISUALLY IMPAIRED CENTRE & FACILITY FOR DIVYANGJAN

Specialized workstation with JAW's and PEARL Software enhance accessibility for partially and totally blind users.



JAWS (Job Access With Speech) screen reader works in the central library by helping visually impaired users access digital resources. It reads text aloud from computer screens, such as library books, e-books, and databases. Users navigate using keyboard shortcuts, and JAWS converts on-screen information into speech or Braille, enabling independent access to library materials.



LIBRARY WORKING HOURS

DAYS	TIMINGS
Monday - Saturday	7.00 AM to 12.00 Midnight
Sunday & Holidays	7.00AM to 7.00PM

LIBRARY COLLECTION

The library has a comprehensive collection of books on engineering, technology, humanities & social science to fulfill the teaching and research needs of the KLEF user community. Resources are as follows:

- » Books-227280
- » Print journals-374
- » E-journals-76607
- » e-resources-23 data bases
- » e-books-15,20,000
- » Plagiarism (Turnitin & Drillbit)

LIBRARY E-RESOURCES AND DATABASES

The Digital library has 130 computer terminals to access the subscribed e-resources, which includes e-books, e - journals, standards, and other information.

- » ASCE
 - » ASME
 - » CMIE-Prowess
 - » IEEE-ASPP Package
 - » SCC Online
 - » EBSCO Art & Architecture
 - » EBSCO Business Source Elite
 - » J-Gate Science and Technology
 - » J-Gate Social Science and Humanities
 - » World E-Book Library
 - » Oxford University Press (OUP)
 - » Nature Biotechnology (Springer)
 - » ProQuest
 - » India stat
 - » Web of science
 - » Bentham science
 - » Scopus
 - » Springer
 - » Delnet
- 

DIGITAL LIBRARY



- » **No. of Computers : 130**
- » **e- journals**
- » **e-books**
- » **e- Databases**
- » **Institutional Repository(Dspace)**
- » **e- Project reports**
- » **Video Lectures**
- » **Open Access Resources**
- » **Video Resources**
- » **Remote Access**
- » **CD-ROM Databases**
- » **e-Theses**
- » **e-Resources**

INSTITUTIONAL MEMBERSHIPS



BORROWING FACILITY

BORROWERS TYPE	NO. OF BOOKS	LOAN PERIOD
Faculty Members	10	One Semester
Non-Teaching Staff	4	One Semester
Research Scholar	8	90 days
PG Students	8	14 Days
UG Students (4 th year)	6	14 Days
UG Students (1 st , 2 nd & 3 rd)	4	14 Days

Borrowing privileges are facilitated to the faculty members, Staff members, Scholars Postgraduate and Undergraduate students of the KLEF community.



LIBRARY SERVICES

- » Books Issue / Return / Renewal
- » New Arrivals – Books / Periodicals
- » News Clipping Services
- » Mail Alert Services
- » Special books collection display
- » Wi-Fi Service
- » Mobile App Services
- » Reference Services
- » Online Public Access Catalogue (OPAC)
- » Photocopy / Printing / Scanning
- » Information Literacy programme
- » User orientations
- » Database Vendors Demo sections
- » Inter Library Loan (ILL)
- » Remote access facility

GUIDELINES

- » Maintain discipline in the library.
- » Personal belongings are not allowed inside the library.
- » Food and beverages are not allowed inside the library.
- » Pilfering of books is serious offence.
- » Marking with pen highlighter / pencil / pen on library furniture / materials are strictly prohibited.

FOR MORE DETAILS CONTACT US

University Librarian
K L Deemed to be University
Green Fields, Vaddeswaram, Guntur District
Andhra Pradesh, Pin Code: 522 302
Phone: 08645 –246948, 246615, Ext: 1651
Email: librarian@kluniversity.in
tatarao17@kluniversity.in
Website: <http://www.kluniversity.in/lib/default.aspx>
Face book: <http://www.facebook.com/centrallibraryklu>





(DEEMED TO BE UNIVERSITY)

KL

**CATEGORY 1
UNIVERSITY**

BY MHRD, Govt. of India

**KL ACCREDITED BY
NAAC WITH A++
GRADE**

nirf
2024

NATIONAL
INSTITUTIONAL
RANKING
FRAMEWORK

RANKED 22
AMONG ALL
UNIVERSITIES

**45 YEARS OF
EDUCATIONAL
LEADERSHIP**