



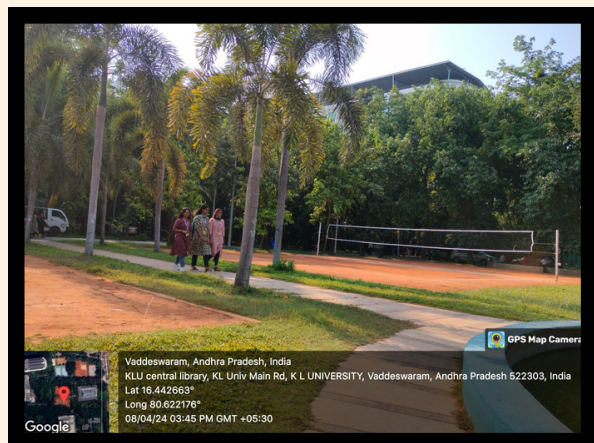
(DEEMED TO BE U N I V E R S I T Y)

GREEN **INITIATIVES** **(2018 - 2023)**

ABOUT

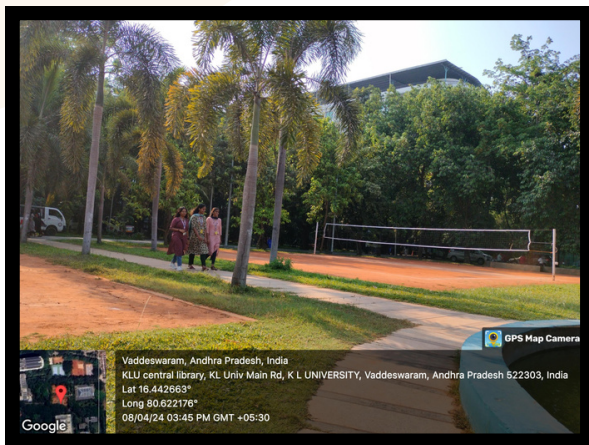
Implementing KLEF's sustainability initiatives encountered multifaceted challenges that underscored the complexity of transitioning towards a greener and more sustainable campus environment. Among these challenges was the resistance to change in transportation and plastic usage habits, necessitating extensive awareness campaigns and concerted efforts to foster behavioral shifts among students, staff, and faculty. The entrenched reliance on conventional modes of transportation and single-use plastics posed significant hurdles in aligning campus activities with sustainability principles. Overcoming these barriers required persistent advocacy and education to instill a deeper understanding of the environmental impacts associated with transportation choices and plastic consumption.

The transition to eco-friendly alternatives presented another formidable challenge, particularly in terms of the upfront investment in infrastructure and resources required to support sustainable practices. Initiatives such as installing bicycle stands and introducing battery-powered vehicles demanded significant financial commitments and logistical planning. Furthermore, maintaining extensive green spaces necessitated ongoing investments in landscaping, irrigation systems, and maintenance staff. These upfront costs highlighted the importance of strategic resource allocation and long-term planning to ensure the sustainability of campus infrastructure and facilities.



Moreover, the implementation of new policies and initiatives required constant monitoring and enforcement to ensure compliance and alignment with sustainability goals. This entailed the establishment of dedicated staff roles and the development of effective waste management systems to track progress and address emerging challenges. Enforcing sustainability policies required a delicate balance between promoting voluntary compliance and implementing corrective measures when necessary. Additionally, fostering a culture of accountability and responsibility among students, staff, and faculty was essential to sustaining momentum and ensuring the success of the Comprehensive Green Campus Initiatives.

In conclusion, the implementation of KLEF's sustainability initiatives encountered a range of challenges that underscored the complexity of fostering a greener and more sustainable campus environment. Overcoming resistance to change, navigating upfront investment costs, and ensuring compliance with new policies required a multifaceted approach that prioritized awareness, education, and strategic resource allocation. By addressing these challenges head-on, KLEF demonstrated its commitment to environmental stewardship and provided a model for other institutions seeking to embark on similar sustainability journeys. Moving forward, continued investment in infrastructure, ongoing education, and community engagement will be essential to sustaining the progress achieved and fostering a culture of sustainability among students, staff, and faculty.



OUR INITIATIVES

1. Tree Transplantation

2. Zero water Discharge

3. Zero waste Discharge

4. Green Building Projects

5. Green Cleaning Chemicals

6. Dual Plumbing System

7. Reducing carbon foot print

8. Usage of BLDC Fans, LED throughout Campus.

1.Tree Transplantation: Nurturing Nature Amid Growth

Throughout the process, students were actively participating in discussions and initiatives aimed at preserving these natural assets. Their engagement exemplified a holistic approach to learning, where theoretical knowledge was being translated into practical action for the betterment of the environment. Through hands-on involvement in the tree transplantation process, students were gaining invaluable insights into the complexities of environmental conservation and sustainable development.

As the transplantation project was unfolding, students were collaborating with faculty members and external experts to identify suitable locations for relocating the trees within the campus. This collaborative effort was fostering a sense of ownership and responsibility among students, empowering them to contribute meaningfully to the university's sustainability initiatives. Moreover, by actively participating in the decision-making process, students were developing critical thinking skills and gaining a deeper understanding of the environmental challenges facing society.

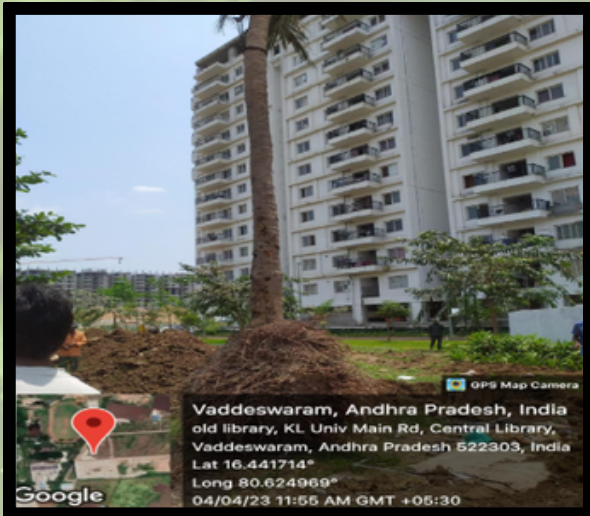
Before



After



Before



After



Furthermore, the tree transplantation initiative was serving as a catalyst for broader discussions on environmental stewardship and sustainable campus development. Through seminars, workshops, and outreach programs, students were engaging with the wider community to raise awareness about the importance of preserving natural resources and adopting eco-friendly practices. This outreach effort was not only deepening students' understanding of environmental issues but also instilling in them a sense of responsibility towards future generations.



2.Zero Water Discharge

KLEF's commitment to environmental sustainability led to the transformative Zero Water Discharge initiative, driven by a profound recognition of responsible water management's pivotal role. At its core were the installation efforts for five cutting-edge Sewage Treatment Plants (STPs), collectively capable of processing 2180 KLD. These STPs stood as significant investments in sustainable infrastructure, engineered to purify wastewater to the highest standards, achieving a remarkable 100% efficiency in reuse.

Though not devoid of challenges, the implementation of the Zero Water Discharge initiative demanded meticulous planning, coordination, and ongoing maintenance. Through unwavering dedication and strategic resource allocation, KLEF surmounted these obstacles, translating vision into tangible outcomes.

Among its notable achievements was the efficient utilization of treated water across campus facilities, a practice that minimized water wastage and bolstered conservation efforts. This approach not only lessened the campus's environmental footprint but also underscored the institution's dedication to responsible resource management.



Furthermore, the initiative proved instrumental in providing students with invaluable experiential learning opportunities. Through engagement in research, internships, and practical coursework, students acquired hands-on skills in environmental management and sustainable technology deployment. This immersive approach not only enriched their academic pursuits but also nurtured their holistic development as conscientious global citizens.

As students engaged with the Zero Water Discharge initiative, they progressed towards a heightened awareness of environmental issues and a deeper appreciation for the importance of sustainable practices. Their involvement in the initiative not only contributed to the success of the project but also empowered them to become catalysts for positive change within the campus community and beyond. Through their active participation, students embodied the institution's commitment to environmental stewardship and exemplified the transformative power of sustainability-driven initiatives.



3.Zero Water Discharge

The endeavor to achieve zero waste discharge stood as a beacon of sustainability and environmental stewardship. The institution's commitment to responsible waste management was not merely a strategic initiative but a testament to its unwavering dedication to sustainable practices.

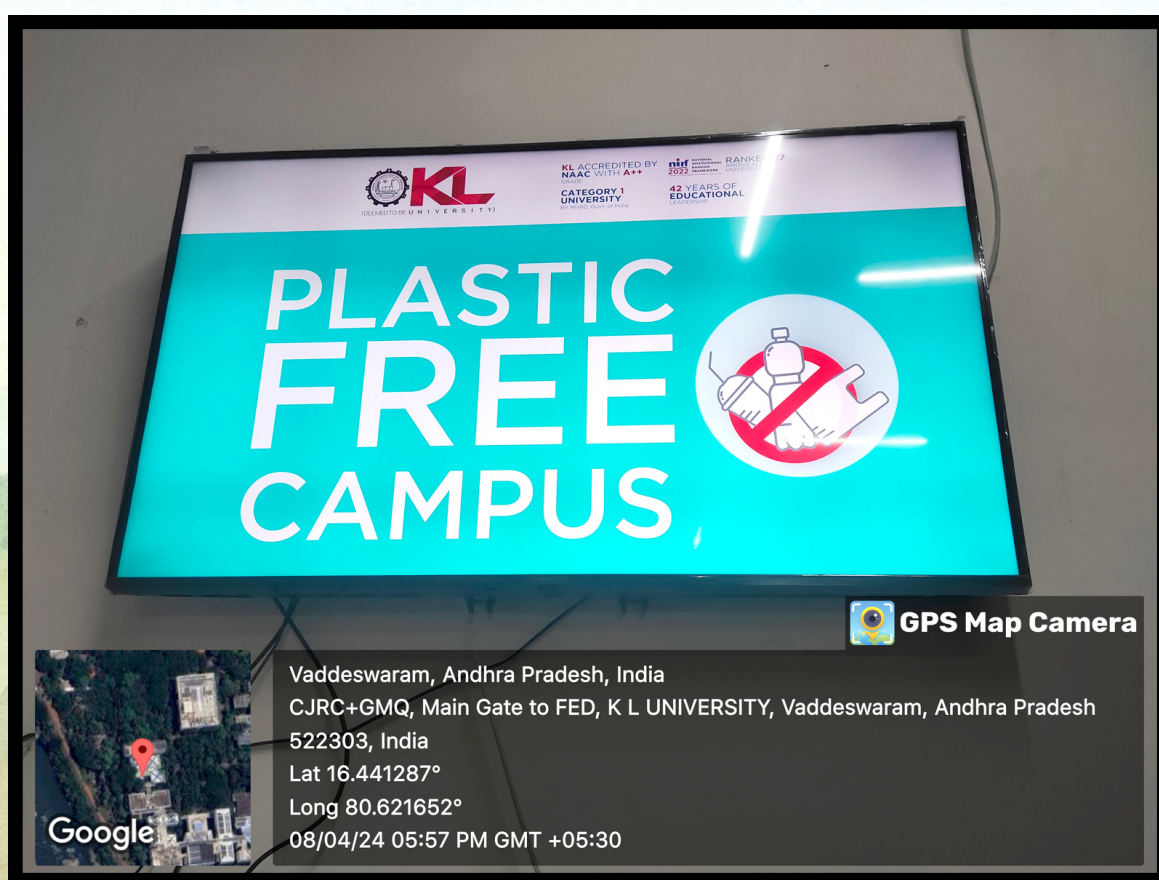
In the past, KLEF implemented a rigorous waste management strategy, ensuring that all types of waste were properly segregated and handed over to PCB-certified vendors for recycling. This meticulous process not only minimized environmental pollution but also promoted a circular economy approach to waste management. Through collaboration with certified vendors, KLEF ensured that waste materials were repurposed and recycled, thereby reducing the burden on landfills and conserving valuable resources for future generations.



Throughout this initiative, students played a pivotal role in driving forward the institution's sustainability agenda. Engaging in hands-on activities related to waste segregation and recycling, students gained practical experience in environmental stewardship while contributing to the campus community. Furthermore, the integration of waste management themes into the curriculum provided students with opportunities to explore the scientific and technological aspects of recycling, fostering their academic progression and research interests in sustainability-related fields.

As students immersed themselves in sustainability-driven initiatives, they experienced a progression marked by heightened environmental consciousness and a deeper understanding of waste management principles. Beyond academic pursuits, students developed practical skills in project management, problem-solving, and teamwork, preparing them for future careers in sustainability and environmental science. Moreover, by actively participating in waste management efforts, students cultivated a sense of responsibility towards the environment and contributed to their holistic development as responsible global citizens.

In essence, KLEF's zero waste discharge initiative exemplifies the institution's commitment to sustainability, student engagement, and holistic development. By integrating waste management into the academic and extracurricular fabric of the institution, KLEF empowered students to become agents of change, driving forward the agenda of environmental stewardship and sustainable development. Through their involvement in sustainability initiatives, students not only gained valuable skills and knowledge but also made meaningful contributions to creating a greener and more sustainable campus environment.

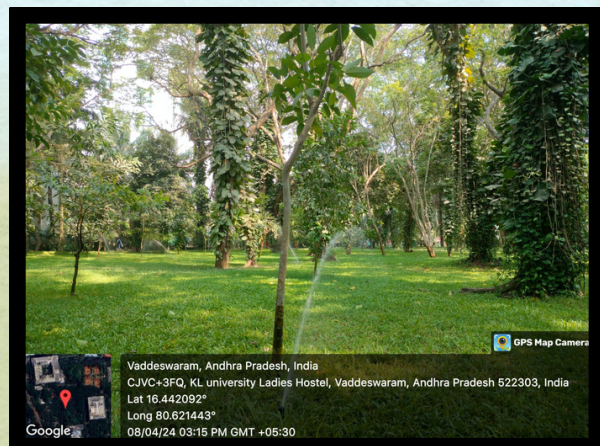
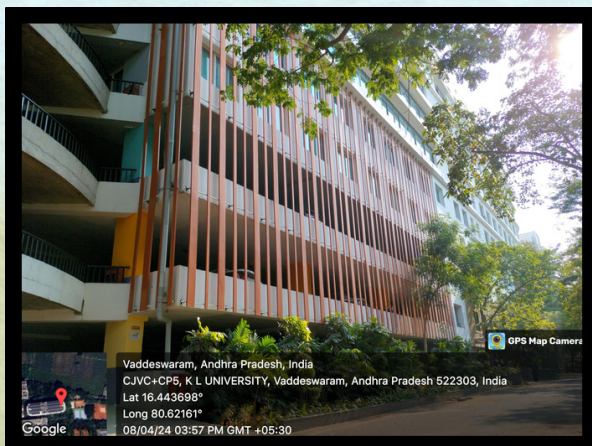


4.Green Building Projects

KLEF's Green Building Projects initiative was a transformative effort where students played a central role, actively shaping our campus's sustainable infrastructure while advancing their own academic and practical skills. Throughout the initiative, students engaged in hands-on research and collaboration, exploring innovative approaches to integrate sustainability into construction practices.

Their involvement extended from conducting feasibility studies on renewable energy integration to researching eco-friendly materials and construction techniques. This experiential learning approach provided students with practical insights into real-world sustainability challenges, fostering their growth as environmentally conscious professionals.

Collaborating across disciplines, students worked closely with faculty mentors and industry experts to ensure that green building projects met rigorous sustainability standards. Through research internships and project-based learning opportunities, students honed their project management and problem-solving abilities while deepening their understanding of environmental issues and sustainable development principles.



Beyond academic pursuits, student engagement in green building projects instilled a sense of responsibility and stewardship for campus sustainability. As they witnessed the tangible impact of their contributions, students became advocates for sustainable practices, inspiring their peers and the wider campus community.

The Green Building Projects initiative not only transformed our campus infrastructure but also empowered students to lead by example in their communities. By actively participating in sustainability-driven initiatives, students embarked on a journey of holistic development, where academic excellence intersects with environmental stewardship, leadership, and social responsibility. As they continue to apply their knowledge and skills to create a greener future, the legacy of KLEF's Green Building Projects lives on, shaping the next generation of sustainability leaders.

5.Green Cleaning Chemicals

KLEF's transition to Green Cleaning Chemicals marked a significant milestone in its sustainability journey, reflecting a commitment to minimizing environmental impact while ensuring a healthy campus environment. This shift involved students actively researching and evaluating eco-friendly cleaning solutions, contributing to the selection and implementation of these alternatives.

Students immersed themselves in hands-on research, assessing the effectiveness of various green cleaning products and monitoring their impact on campus cleanliness and indoor air quality. This experiential learning approach equipped students with practical skills in project management and data analysis, fostering their academic growth and preparing them for future roles in sustainability.



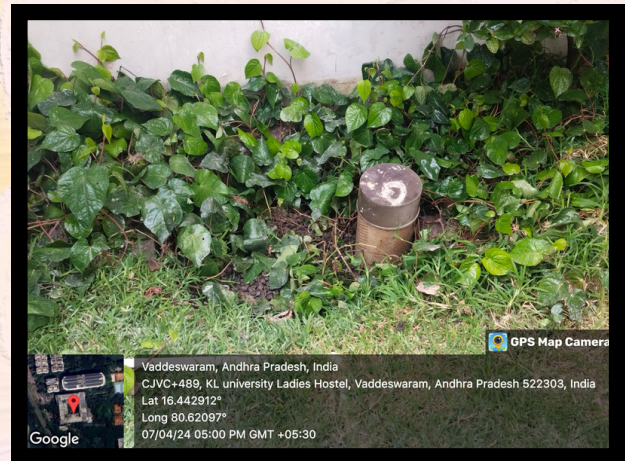
Additionally, students took the lead in raising awareness about the benefits of green cleaning chemicals through workshops, seminars, and awareness campaigns. By engaging their peers and the wider campus community, students promoted the adoption of sustainable cleaning practices and encouraged behavior change towards eco-friendly alternatives.

The Green Cleaning Chemicals initiative not only exemplified KLEF's dedication to sustainability but also empowered students to become advocates for environmental stewardship. Through their involvement, students experienced personal development, emerging as leaders in the pursuit of a greener and healthier campus environment.

6. Dual Plumbing System

In the pursuit of sustainability at KLEF, the innovative Dual Plumbing System emerged as a groundbreaking solution to optimize water usage across campus construction areas. This initiative, propelled by student involvement, epitomized a paradigm shift towards resource efficiency and environmental stewardship.

Throughout the development and implementation phases, students actively participated in research, design, and testing, gaining invaluable hands-on experience. This interdisciplinary engagement nurtured their practical skills, fostering growth in project management, problem-solving, and collaboration



As the initiative unfolded, students witnessed firsthand the tangible impact of their contributions on campus sustainability. By integrating treated water into construction processes, they not only championed water conservation but also deepened their understanding of the intricate relationship between infrastructure development and environmental well-being.

Furthermore, the Dual Plumbing System initiative served as a catalyst for heightened environmental consciousness among students. By immersing themselves in sustainability-driven projects, they cultivated a sense of responsibility towards driving positive change, both within the campus community and beyond.

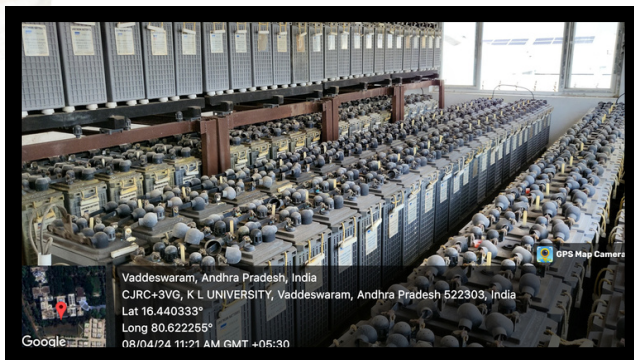
In essence, the Dual Plumbing System initiative exemplifies KLEF's dedication to fostering a culture of sustainability and holistic student development. By empowering students to tackle real-world challenges, the institution equips them with the skills and mindset necessary to become leaders in sustainable innovation and environmental stewardship.

7.Reducing Carbon Foot Print

In the pursuit of sustainability at KLEF, the innovative Dual Plumbing System emerged as a groundbreaking solution to optimize water usage across campus construction areas. This initiative, propelled by student involvement, epitomized a paradigm shift towards resource efficiency and environmental stewardship.

Throughout the development and implementation phases, students actively participated in research, design, and testing, gaining invaluable hands-on experience. This interdisciplinary engagement nurtured their practical skills, fostering growth in project management, problem-solving, and collaboration.

As the initiative unfolded, students witnessed firsthand the tangible impact of their contributions on campus sustainability. By integrating treated water into construction processes, they not only championed water conservation but also deepened their understanding of the intricate relationship between infrastructure development and environmental well-being.



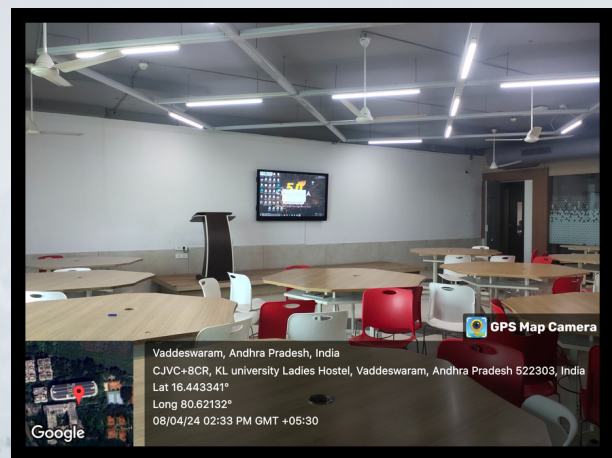
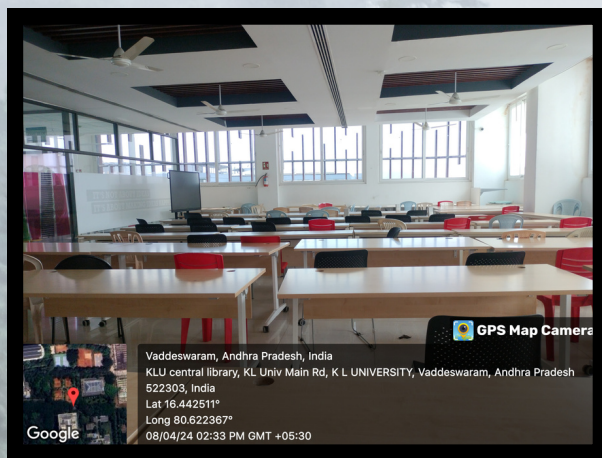
Furthermore, the Dual Plumbing System initiative served as a catalyst for heightened environmental consciousness among students. By immersing themselves in sustainability-driven projects, they cultivated a sense of responsibility towards driving positive change, both within the campus community and beyond.

In essence, the Dual Plumbing System initiative exemplifies KLEF's dedication to fostering a culture of sustainability and holistic student development. By empowering students to tackle real-world challenges, the institution equips them with the skills and mindset necessary to become leaders in sustainable innovation and environmental stewardship.

8.Usage of BLDC Fans, LED throughout Campus

KLEF's initiative to implement BLDC fans and LED lighting throughout the campus exemplified a commitment to energy efficiency and sustainability. This endeavor involved replacing traditional fans with BLDC (Brushless Direct Current) fans and upgrading conventional lighting to LED fixtures, aimed at reducing energy consumption and carbon emissions.

Students played a pivotal role in this initiative, actively participating in research projects and hands-on activities related to energy efficiency and sustainable technologies. Through their involvement, students gained practical experience in project management, data analysis, and technology implementation, contributing to their academic progression and holistic development.



As the institution transitioned to BLDC fans and LED lighting, students witnessed firsthand the benefits of sustainable technologies in reducing energy costs and environmental impact. Engaging with these initiatives not only enhanced students' understanding of sustainability principles but also instilled a sense of responsibility towards environmental stewardship.

The implementation of BLDC fans and LED lighting reflected a broader commitment to integrating sustainability into campus operations and fostering a culture of environmental consciousness among students. By embracing energy-efficient technologies, KLEF not only reduced its carbon footprint but also inspired students to explore innovative solutions to environmental challenges.

Overall, the initiative to use BLDC fans and LED lighting throughout the campus exemplified KLEF's dedication to sustainability and provided students with valuable learning opportunities that contributed to their holistic development as responsible global citizens.

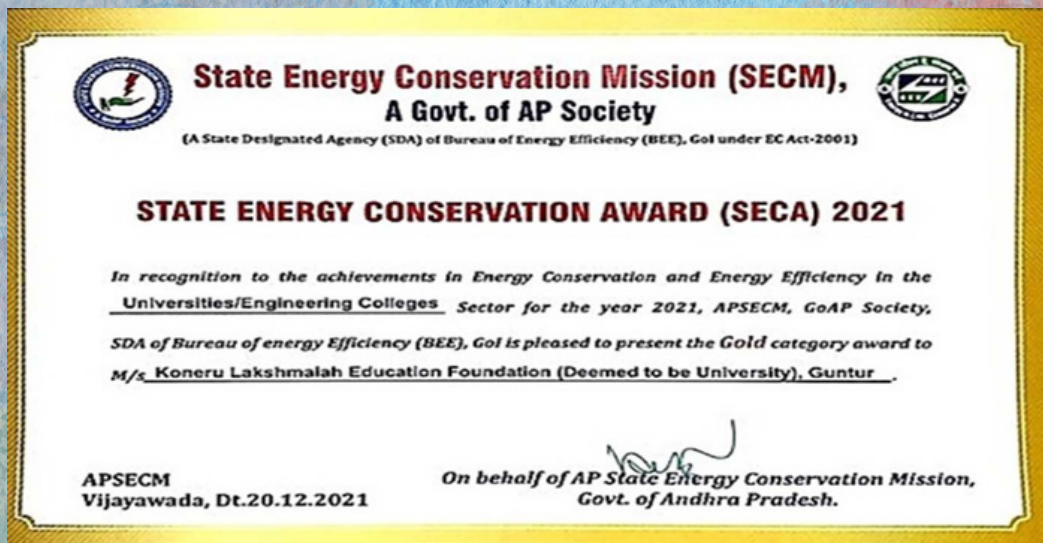
OUR ACHEIVEMENTS







KL University Received
Excellence in
Energy Management Award - 2022
from CII





GREEN RATING FOR INTEGRATED HABITAT ASSESSMENT
*Koneru Lakshmaiah Education Foundation, Central Research Block,
Vijayawada, Andhra Pradesh*

has been provisionally certified with a

'Five Star'
rating under
GRIHA



An initiative of Ministry of New and Renewable Energy
Government of India
and The Energy and Resources Institute

Date of Issue: 19th July 2021

Chief Executive Officer
GRIHA Council



उत्कृष्टता प्रमाण पत्र

अभातशिप राष्ट्र स्तरीय

स्वच्छ एवं स्मार्ट परिसर पुरस्कार 2020

(परिसरों का संधारणीयता की ओर प्रथम कदम)

कोनेरू लक्ष्मि: एजुकेशन फाउंडेशन, आंध्र प्रदेश

संस्थान को उनके उत्कृष्ट स्वच्छ एवं स्मार्ट परिसर को बनाए रखने में “भारतीय ज्ञान प्रणालियों”
के अनुप्रयोग के लिए द्वितीय पुरस्कार प्रदान किया जाता है।

Certificate of Excellence

AICTE National Level

Clean and Smart Campus Award 2020

(A Campus first step towards Sustainability)

KONERU LAKSHMAIAH EDUCATION FOUNDATION,

ANDHRA PRADESH

The Institute is hereby awarded with **Second Prize** for application of
“**Indian Knowledge Systems**” in maintaining their campus as Clean
& Smart Campus.



This is a Green Certificate. The awarding institution and the
awardee are committing to increase the green cover of our
nation by planting a sapling and nurturing it. Scan the QR code
to view the sapling details and its location.

SasyaShymalamMataramVande.

Adamyia Chetana
www.adamyachetana.org

ANIL D SAHASRABUDHE

Chairman

M P POONIA

Vice Chairman

RAJIVE KUMAR

Member Secretary

