



G KONDURU & IBRAHIMPATNAM MANDAL

G Konduru Mandal - Krishna District, Andhra Pradesh

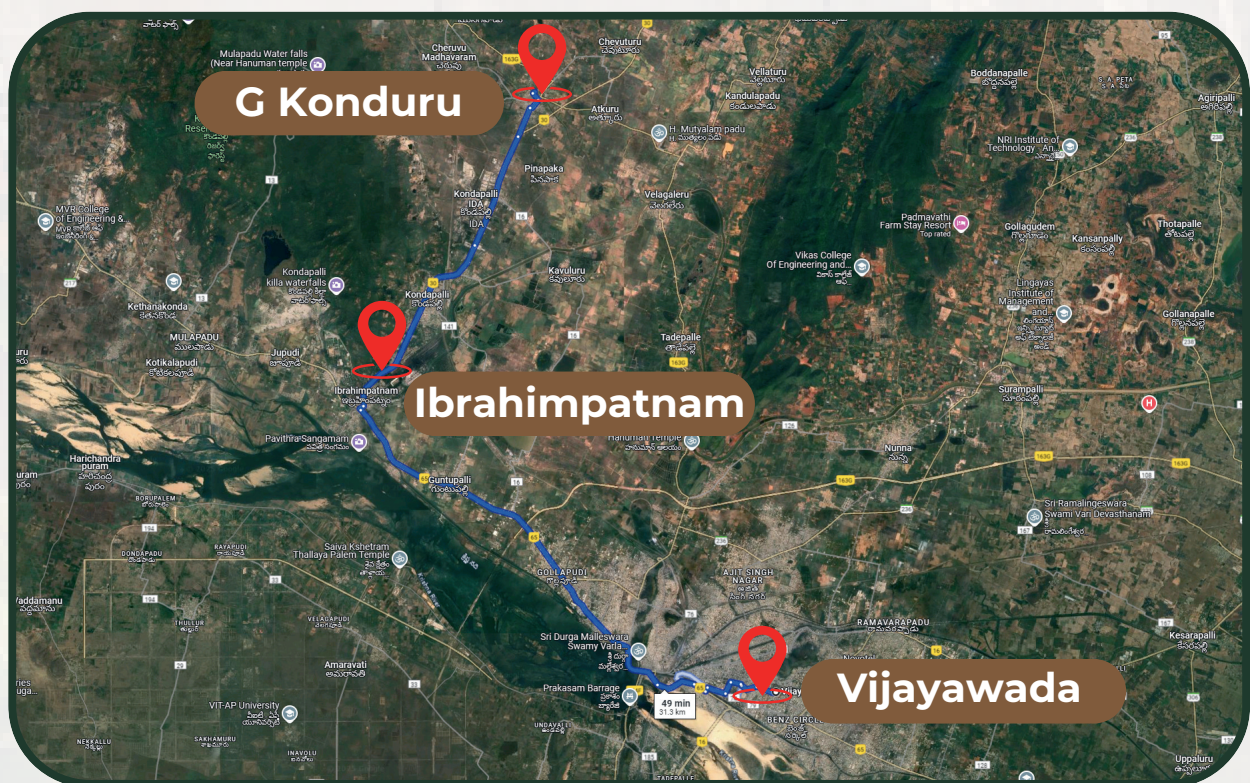
About the Mandal

Location and Geography

G Konduru Mandal, situated in the NTR district of Andhra Pradesh (formerly part of Krishna district), is an important administrative division known for its agricultural and socio-cultural relevance. Located approximately 35 km from Vijayawada, it is nestled in the Krishna River basin, featuring fertile soils that support the cultivation of a variety of crops. Paddy, maize, and horticultural produce like mangoes, guavas, and coconuts dominate the agricultural landscape.

Demographics

G Konduru Mandal has a population of 53,425, with a sex ratio of 992 females per 1,000 males, reflecting a near-balanced demographic. The Scheduled Castes and Scheduled Tribes form a significant part of the population, highlighting the Mandal's diverse social composition. The literacy rate stands at 67.21%, demonstrating steady progress in educational initiatives and awareness.



Geographical Location from Vijayawada to G Konduru

G Konduru Mandal - Krishna District, Andhra Pradesh

Cultural and Social Highlights

G Konduru Mandal has a vibrant cultural life, with traditional festivals celebrated enthusiastically. The Mandal is home to several temples and religious landmarks, making it a center for community gatherings and spiritual activities. Local fairs and festivals also play a significant role in fostering community spirit.

Agriculture and Natural Resources

The Mandal thrives on agriculture due to its fertile lands, which benefit from the Krishna River basin. Farmers engage in multi-cropping, with horticulture playing a vital role in boosting the economy. The region's proximity to Vijayawada provides opportunities for selling agricultural produce in urban markets, further enhancing the livelihoods of local farmers.

Connectivity and Development

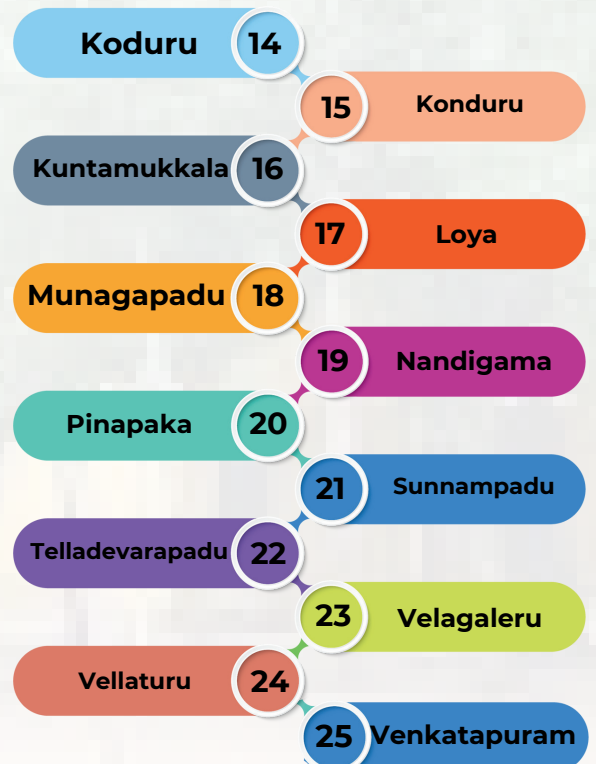
Road connectivity is a strength of G Konduru Mandal, linking it effectively to Vijayawada and neighboring areas. Developmental activities, including improved infrastructure and access to quality education, have contributed to the area's steady growth.



NUMBER OF VILLAGES:

The Mandal consists of 25 villages, with G Konduru serving as the administrative headquarters. The area is well-connected through road networks, facilitating access to nearby cities and markets. Educational institutions such as government and private schools contribute to the socio-economic development of the Mandal, ensuring the growth of the local population.

LIST OF VILLAGES



Agriculture in G Konduru Mandal, Krishna District

Agriculture is the primary occupation in G Konduru Mandal, with most of the population relying on farming and allied activities for their livelihoods. The fertile soils of the Krishna River basin and favorable weather conditions make the Mandal suitable for cultivating a variety of crops.



List of Major Crops

- **Food Crops:** Paddy, maize, and red gram.
- **Horticultural Crops:** Mango, guava, coconut, and cashew nut.
- **Vegetables:** Tomato, chili, brinjal, and leafy greens like spinach and amaranthus.
- **Plantation Crops:** Banana



Agriculture in G Konduru Mandal is diversified, with a mix of food crops, horticulture, and plantation crops contributing to the local economy. Farmers employ traditional methods as well as modern agricultural practices to optimize productivity.

The sector also supports indirect employment through activities like transportation, marketing, and processing of agricultural produce. G Konduru's proximity to Vijayawada helps farmers access urban markets, ensuring better prices for their produce and boosting the rural economy.



Education and Healthcare Facilities in G Konduru Mandal, Andhra Pradesh

G. Konduru Mandal, located in NTR District of Andhra Pradesh, encompasses several educational institutions and healthcare facilities serving its residents.

Educational Institutions:

□The Mandal is home to various schools, including Mandal Parishad Primary Schools (MPPS) and Mandal Parishad Upper Primary Schools (MPUPS). Notable institutions include:

- MPUPS Chevuturu
 - MPUPS Gurrajapalem
 - MPUPS Kutamukkala
 - MPUPS Ch.Nandigama
 - MPUPS Vellaturu
 - MPUPS K.B.Palem
 - MPUPS Sunnampadu
 - MPUPS Atkuru
 - MPPS Venkatapuram
 - ZPHS Gangineni
 - ZPHS G.Konduru
 - ZPHS Koduru



These schools cater to the primary and secondary educational needs of the local population

Healthcare Facilities:

Healthcare services in G. Konduru Mandal are primarily provided by the Primary Health Centre (PHC) G. Konduru, which addresses the medical needs of the community.

Additionally, the Primary Health Centre Velagaleru serves residents in the Velagaleru area of the Mandal.

Education and Healthcare Facilities in G Konduru Mandal, Andhra Pradesh

Village Name	MPP Schools	MPUP Schools	ZPH Schools	Anganwadi Centers
Atukuru	1	1	0	2
Bhimavarappadu	-	-	-	-
Chegireddipadu	-	-	-	-
Cheruvu Madhavaram	1	1	0	2
Chinnanandigama	0	1	0	2
Chevuturu	1	1	0	3
Duggiralapadu	1	0	0	2
G Konduru	3	3	2	8
Gaddamanugu	1	1	0	2
Ganginenipalem	2	0	1	3
Currajupalem	0	1	0	1
Haveli Mutyalampadu	1	0	0	2
Kadimpothavaram	-	-	-	-
Kandulapadu	1	1	0	1
Kavuluru	1	1	1	4
Koduru	1	0	1	3
Konduru	-	-	-	-
Kuntamukkala	1	1	1	4
Loya	-	-	-	-
Munagapadu	-	-	-	-
Nandigama	-	-	-	-
Pinapaka	1	1	0	1
Sunnampadu	1	1	0	1
Telladevarapadu	1	0	0	1
Velagaleru	2	0	1	7
Vellaturu	2	1	0	4
Venkatapuram	1	0	0	2
Kattubadipalem	1	1	0	1

Cultural and Historical Importance of G Konduru Mandal: Thanda Scheduled Tribe Traditions

G. Konduru Mandal is home to a rich cultural heritage, shaped by its diverse communities, including the Scheduled Tribe populations residing in Thandas (tribal hamlets). These tribal communities play a significant role in maintaining and celebrating traditional customs, art forms, and rituals, which form the heart of their cultural identity.



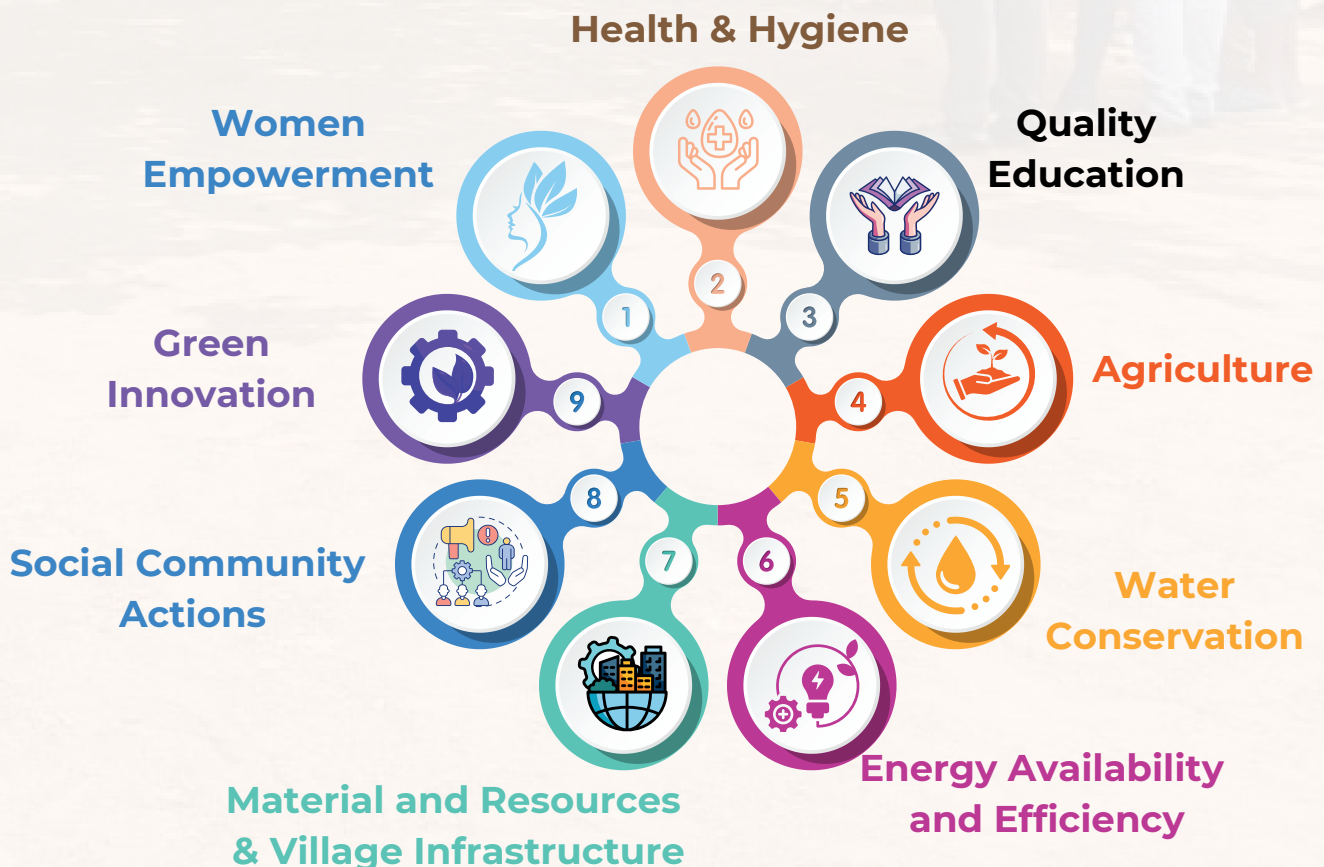
Thanda tribes of G. Konduru are renowned for their colorful festivals and traditional dances, such as the Lambadi dance, performed with great fervor during celebrations and special occasions. Their vibrant attire, adorned with handcrafted jewelry and intricate beadwork, reflects their artistic legacy and deep connection to their heritage. Embroidery and other handcrafts further symbolize their creative skills and unique cultural expressions.

SMART VILLAGE REVOLUTION: TRANSFORMING RURAL DEVELOPMENT THROUGH INNOVATION AND SUSTAINABILITY

The Smart Village Revolution (SVR) project empowers students to lead research, innovate solutions, and drive rural development. Focused on sustainable change, this initiative addresses pressing issues through innovative, student-led projects across nine critical domains: Agriculture, Quality Education, Village Infrastructure, Water Conservation, Energy Availability and Efficiency, Material and Resources, Social Community Actions, Green Innovation, Women Empowerment. From water conservation to healthcare accessibility, SVR empowers rural communities by providing tailored solutions that bridge the gap between technology and tradition. Students engage in hands-on research and practical implementation, fostering transformative change while making a lasting societal impact.

By integrating community needs with sustainable practices, the project strengthens rural resilience and enhances quality of life. Through collaborative efforts, the initiative aspires to create a model of progress and prosperity.

The list of domains:



PILOT STUDY



Students play an integral role in conducting surveys to assess various aspects of community development within the Smart Village Revolution (SVR) project: Survey on Sanitation and Health Measures: Students conduct surveys to gauge the adoption of sanitation practices and healthy habits within the community.

By assessing the utilization of sanitation facilities and promoting healthy behaviors, students contribute to improving overall well-being. 1. Education Enrollment and Progress Survey: Students survey the enrollment of children in schools and monitor their educational progress.



Through this initiative, students gather data on school attendance and academic performance, enabling targeted interventions to support educational advancement. 2. Power Systems Assessment Survey: Students conduct surveys to evaluate the power systems utilized in households. By examining the methods of power generation and consumption, students gather valuable insights to inform initiatives aimed at promoting energy efficiency and sustainability.

HEALTH & HYGIENE

Establishing healthcare facilities with essential services and trained professionals, along with health education on hygiene and disease prevention, ensures community wellness. Access to clean water via purification systems and sanitation facilities improves hygiene. Essential medications and vaccines are available, promoting early detection through regular screenings. Fitness programs and collaborations with local health workers foster healthy lifestyles. These initiatives, including outreach programs, form a comprehensive approach to community health.



KL University has actively contributed to improving health and hygiene in villages through a series of impactful health camps and awareness programs. These initiatives include health camps focusing on anemia awareness, where villagers are educated about its causes, prevention, and management. Blood grouping camps are conducted to ensure individuals are aware of their blood type, which is crucial during emergencies.



Programs promoting hygienic behaviors educate communities on practices like regular handwashing and maintaining clean surroundings. Pilot studies help identify specific health issues prevalent in the villages, guiding targeted interventions. Awareness drives on safe disposal of used masks and general health and hygiene further equip villagers with essential knowledge to prevent diseases and maintain a healthy environment. These efforts have significantly improved health standards in rural areas, fostering a healthier and more informed community.



AGRICULTURE

Agriculture in G Konduru Mandal thrives through the integration of advanced farming techniques and traditional wisdom. By leveraging precision agriculture, farmers make informed decisions about irrigation, fertilization, and pest management, maximizing yields while conserving resources. The adoption of sustainable practices like organic farming, crop rotation, and renewable energy integration ensures environmental sustainability and long-term productivity.



Agriculture serves as the cornerstone of the economy and livelihoods in G Konduru Mandal. It is the primary source of income for the majority of the population, sustaining rural development and economic stability. The cultivation of diverse crops ensures food security for the community, making essential staples readily available and accessible.

In addition to direct employment in farming, agriculture in G Konduru Mandal generates indirect job opportunities in allied sectors such as transportation, marketing, and agro-processing. The region's agricultural practices are deeply intertwined with its cultural heritage, preserving traditional values and fostering a sense of community.





Farmers in G Konduru Mandal practice a mix of traditional and modern agricultural methods to optimize crop production in accordance with the local climate and soil conditions. The main crops cultivated include paddy, groundnut, cotton, and pulses. Some farmers also engage in horticulture, growing fruits and vegetables, depending on market demand and climate suitability. Livestock farming, such as cattle and sheep rearing, along with poultry, is also common, providing additional income and supporting the agricultural ecosystem in the region. These diversified agricultural practices help sustain the local economy and improve the livelihoods of the farming community.



The integration of modern farming methods, including the use of high-yielding seeds, advanced irrigation systems, and precision farming techniques, has helped increase productivity and sustainability in the region. However, traditional farming practices, passed down through generations, continue to play a vital role in maintaining soil fertility and preserving local agricultural knowledge.

QUALITY EDUCATION

The village of Konduru with in the mandal has three government primary schools and one private primary school, ensuring foundational education for children. For higher classes, there is one government middle school and one private middle school. Additionally, the village hosts both a government and a private secondary school, facilitating continued education up to the secondary level.



KL University contributes to mitigating water scarcity challenges. The region has demonstrated commendable safety protocols in educational institutions. For instance, teachers in G. Konduru mandal successfully safeguarded nearly 600 girl students during flash floods triggered by unprecedented rainfall, highlighting the commitment to student safety. Overall, G. Konduru Mandal is dedicated to providing accessible and quality education to its residents, continually striving to enhance its educational infrastructure and resources.

KL University conducted training sessions for teachers in G.Konduru on innovative teaching methodologies and the use of technology in education delivery. These sessions aimed to equip educators with modern teaching techniques and tools to enhance the learning experience for students. Through hands-on workshops and interactive sessions, teachers were trained on integrating technology into their lesson plans effectively. They learned how to utilize educational software, digital resources, and multimedia materials to create engaging and interactive learning environments.



By empowering teachers with these skills, KL University is ensuring that students in vellature receive a high-quality education that prepares them for success in the digital age.

Water Conservation

The villages in G. Konduru Mandal are currently benefiting from workshops and awareness programs on rainwater harvesting techniques aimed at promoting water conservation. These ongoing efforts focus on sensitizing the local community about the importance of preserving water resources. Practical demonstrations and interactive sessions are being conducted to showcase the benefits and methods of rainwater harvesting. Villagers are being trained on how to collect and store rainwater for various purposes, thereby reducing dependency on limited water supplies. This initiative is fostering a culture of water conservation, with collaborative efforts underway with local authorities and experts to ensure its success and scalability. By participating in these activities, the villages of G. Konduru Mandal are contributing to addressing water scarcity challenges.



SVR initiative emphasizes environmental sustainability through rainwater harvesting in Musunuru and KLEF-SVR adopted villages. Plantation drives with geo-tagging have been conducted in Porat Nagar, Sitarampuram Thanda, Kanimarla, and Pinapaka to enhance greenery. Awareness camps promote open defecation-free practices in Vellaturu, Pinapaka, and Chinna nadigama

.

Green Innovations

The Smart Village Revolution (SVR) initiative actively fosters environmental consciousness by organizing impactful programs and campaigns aimed at preserving natural resources and promoting sustainable practices. Tree plantation drives with geo-tagging have been successfully conducted in Vellaturu, Cheruvu Madhavaram, and Pinapaka, not only increasing green cover but also enabling the tracking and monitoring of planted saplings for long-term growth.



Awareness programs in villages like G. Konduru, Kattubadipalem, and Cheemalapadu focus on reducing plastic usage and promoting sustainable waste disposal methods, aiding communities in adopting eco-friendly alternatives. Additionally, villages in G. Konduru Mandal actively celebrate World Ozone Day, using the platform to raise awareness about ozone layer protection and environmental conservation.



The promotion of clay Vinayaka idols during festivals reflects a strong commitment to reducing pollution and protecting the environment. By combining community involvement with practical approaches, villages in G. Konduru Mandal are encouraged to embrace and maintain eco-friendly practices.



The SVR initiative actively supports rainwater harvesting and advocates for the construction of eco-friendly toilets, contributing to water conservation and improved sanitation in rural areas. In addition to these efforts, campaigns are being conducted to minimize the use of chemical pesticides and promote organic farming practices, ensuring healthier soil and safer food for communities. Solar power projects are being implemented to provide renewable energy solutions, while energy-efficient cooking methods are being promoted to reduce carbon footprints.

The initiative also emphasizes the importance of maintaining clean water sources by educating villagers about proper sanitation and waste management, ensuring a healthier and more sustainable environment.



SOCIAL COMMUNITY ACTIONS



SVR initiative supports rainwater harvesting and promotes the construction of eco-friendly toilets, helping to conserve water and reduce waste in rural areas. Campaigns to reduce chemical pesticide use and encourage organic farming practices are also being conducted, aiming to protect the health of both the soil and the people. Solar power projects, along with the promotion of energy-efficient cooking methods, are making significant strides in reducing carbon footprints while improving the quality of life in rural communities.

SVR initiative supports rainwater harvesting and promotes the construction of eco-friendly toilets, helping to conserve water and reduce waste in rural areas. Campaigns to reduce chemical pesticide use and encourage organic farming practices are also being conducted, aiming to protect the health of both the soil and the people. Solar power projects, along with the promotion of energy-efficient cooking methods, are making significant strides in reducing carbon footprints while improving the quality of life in rural communities.



The SVR initiative in G. Konduru Mandal emphasizes rainwater harvesting and the construction of eco-friendly toilets, supporting water conservation and waste reduction within the community. Campaigns in the region focus on reducing the use of chemical pest

WOMEN EMPOWERMENT



The Smart Village Revolution (SVR) is committed to empowering rural communities, particularly women, through targeted skill-building and sustainable development programs. In Pinapaka, workshops on cloth and jute bag making equip women with vocational skills, fostering self-reliance and opening avenues for income generation. Additionally, training sessions on energy and resource management are conducted to encourage efficient utilization of available resources, enhancing community sustainability.

women's empowerment through skill-building activities and training in kitchen gardening in villages like kandulapadu, G.konduru, and gurrajupalem. These programs not only provide women with practical skills to contribute to household nutrition but also pave the way for sustainable livelihoods. By integrating economic empowerment, environmental consciousness, and community well-being, the continues to transform rural lives and foster long-term growth.





In G. Konduru Mandal, women empowerment initiatives have brought significant progress to rural communities. Workshops on making cloth and jute bags have created sustainable income opportunities for women, while training in kitchen gardening has encouraged nutritional self-sufficiency. Skill-building and empowerment programs focus on enhancing employability and entrepreneurial skills among women. Awareness programs on waste management, sanitation, and hygienic practices emphasize the importance of hygiene in improving quality of life and economic development. Village libraries promote adult literacy, while training on sustainable livelihoods equips women with essential skills and knowledge. Energy and resource management workshops empower women in G. Konduru villages to adopt sustainable practices, fostering self-reliance and environmental consciousness within the community.



VILLAGE INFRASTRUCTURE



KL University is committed to driving meaningful change in G. Konduru Mandal by fostering sustainable and innovative infrastructure solutions. The SVR Club serves as a platform for students to actively contribute to transformative initiatives aimed at enhancing the quality of life in the villages.

In G. Konduru Mandal, students focus on infrastructure improvement projects such as constructing better roads to improve connectivity, developing sanitation facilities to ensure hygiene, and creating community spaces that promote social and cultural activities. Water management systems, including the construction of soak pits and rainwater harvesting units, are being developed to address water scarcity and promote sustainable resource utilization. Efforts are also being made to install solar-powered streetlights, reducing energy costs and ensuring safety during nighttime.



These projects are implemented with active community involvement, ensuring that the solutions meet local needs and are sustainable in the long term. Training programs are also organized to empower villagers with the knowledge to maintain and utilize the infrastructure effectively. These comprehensive efforts are geared toward the holistic growth of the region.





By blending modern technology with traditional practices, the club addresses local challenges in a way that respects cultural heritage while promoting progress. Through these efforts, the SVR Club not only empowers rural populations but also equips students with hands-on experience in sustainable development, fostering a sense of social responsibility and innovation.



Initiatives such as constructing well-planned roads, upgrading sanitation facilities, and building community spaces allow students to apply their knowledge to real-world problems. Students are also involved in designing and implementing water conservation systems like rainwater harvesting units and soak pits to address water scarcity issues. Projects like installing solar-powered streetlights and improving digital connectivity contribute to creating sustainable and energy-efficient infrastructure in the villages. These efforts not only enhance the quality of life in rural areas but also provide students with hands-on experience in developing scalable and sustainable solutions.

SMART VILLAGE REVOLUTION

"India lives in its villages," a statement attributed to Mahatma Gandhi, underscores the essential role villages play as the backbone of India's economy, culture, and society. Gandhi envisioned a nation where rural areas thrived through self-sufficiency, equitable opportunities, and sustainable development. This vision aligns seamlessly with the concept of the **Smart Village Revolution**, which seeks to bridge the gap between rural and urban areas by integrating technology, infrastructure, and innovation into traditional village systems.

Smart Village Revolution initiative aims to transform rural life by providing access to quality education, healthcare, digital connectivity, renewable energy, and sustainable farming practices. By leveraging modern tools and empowering rural communities, this movement fosters inclusive growth, ensuring villages are not only self-reliant but also contributors to India's overall progress.

