



TADEPALLI MANDAL & VIJAYAWADA RURAL

Tadepalli Mandal - Krishna District, Andhra Pradesh

About the Mandal

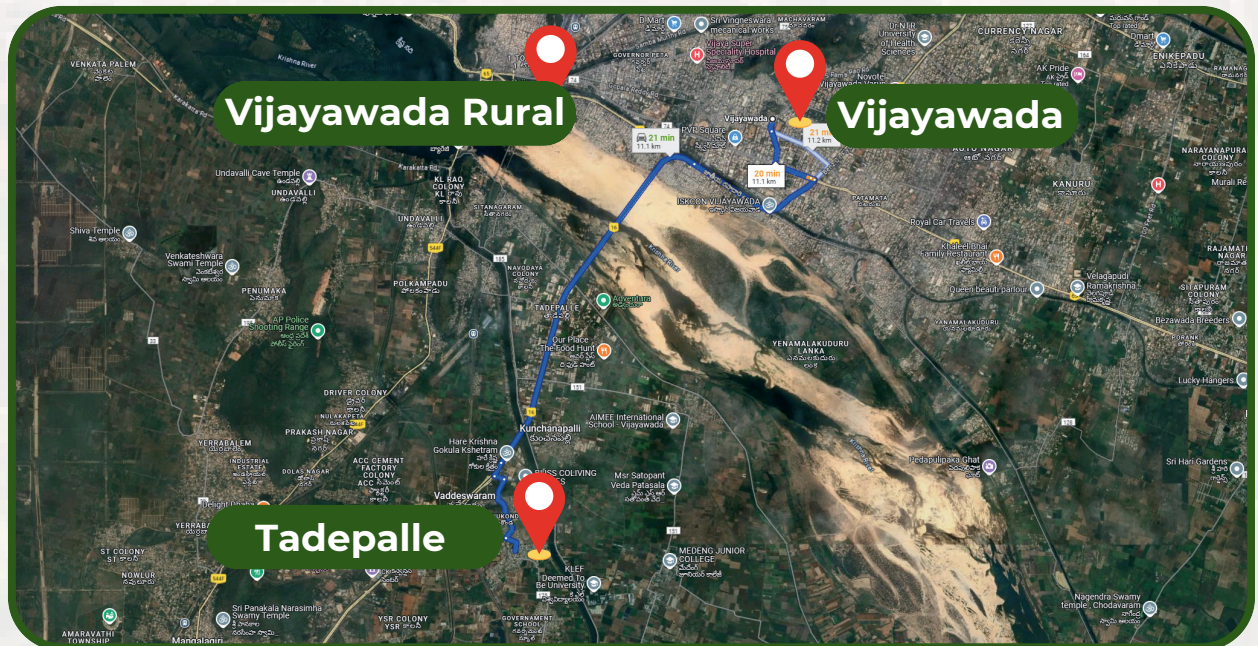
Tadepalli Mandal is an administrative division in the Guntur district of Andhra Pradesh, India. It is part of the Mangalagiri revenue division and includes both rural villages and urbanized areas.

Geography and Demographics

Covering an area of approximately 75.89 square kilometers, Tadepalli Mandal had a population of 99,164 as per the 2011 Census.

The population comprises 49,238 males and 49,926 females, resulting in a sex ratio of approximately 1,014 females per 1,000 males. The literacy rate stands at 77.68%, which is above the national average of 73.00%.

Scheduled Castes and Scheduled Tribes constitute significant portions of the population, with 16,487 and 4,218 individuals



Geographical Location from Vijayawada to Tadepalli

NUMBER OF VILLAGES:

Tadepalli Mandal consists of 9 villages, each with its own unique size and population. Predominantly rural, the villages of Tadepalli thrive on agriculture as the primary source of livelihood, with crops like paddy, groundnut, cotton, and horticultural produce such as mangoes and guavas forming the core of the local economy. The villages showcase a blend of traditional agricultural practices and emerging infrastructure, contributing to the Mandal's cultural and economic vitality. With agriculture at its heart, Tadepalli Mandal continues to evolve, balancing its rural heritage with the progress of modern development.

LIST OF VILLAGES IN MANDAL



Agriculture in Tadepalli Mandal, Krishna District

Agriculture forms the cornerstone of Tadepalli Mandal's economy, with a large portion of the population dependent on farming and allied activities. The fertile soils of the Krishna River basin, coupled with favorable climatic conditions, make this region highly suitable for the cultivation of a variety of crops.



List of Major Crops

Food Crops: Rice, maize, and pulses.

Horticultural Crops: Mango, guava, banana, and coconut.

Vegetables: Brinjal, tomato, chili, and leafy greens.

Aquaculture: Practiced in certain areas, contributing to the local economy.



Agriculture plays a vital role in the economy and livelihoods of the people in Tadepalli. It serves as the economic backbone of the region, sustaining the rural economy and providing a source of income for the majority of its residents. Local crop production ensures food security by making staple foods readily available and accessible to the community.

The agricultural sector in Tadepalli is a significant source of employment, offering direct opportunities in farming and indirect opportunities in associated activities such as marketing and processing.



Education and Healthcare Facilities in Tadepalli Mandal, Andhra Pradesh

Tadepalli Mandal in Guntur District, Andhra Pradesh, is home to several educational institutions, including primary and secondary schools. According to available records, there are Mandal Parishad Primary Schools (MPPS) in villages such as Tadepalli, Kunchanapalli, Undavalli, Penumaka, Vaddeswaram, Mandadam, Neerukonda, and Krishnayapalem.



In terms of healthcare facilities, Mylavaram Mandal is served by a Community Health Center (CHC) located in Mylavaram, which caters to the medical needs of the local population.

Regarding Anganwadi centers, which play a crucial role in child care and development, Tadepalli Mandal operates a total of 48 centers.



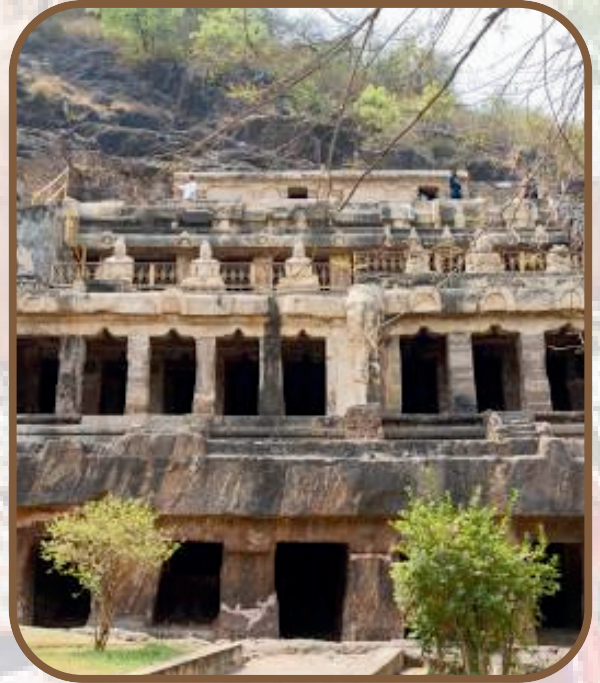
Education and Healthcare Facilities in Tadepalli Mandal, Andhra Pradesh

Village Name	MPP	MPUP	ZPH	Anganwadi
Tadepalli	3	1	1	6
Chirravuru	4	0	1	7
Gundimeda	2	1	0	5
Ippatam	3	1	0	4
Kolanukonda	4	0	1	6
Kunchenapalli	5	1	2	8
Penumaka	6	2	2	10
Undavalli	3	1	1	5
Vaddeswaram	2	1	1	4



Cultural and Historical Importance of Tadepalli Mandal

Tadepalli Mandal is enriched with the cultural heritage of its diverse communities, including the Scheduled Tribe populations residing in its villages. These communities play a vital role in preserving traditional tribal customs, art forms, and rituals. The tribes in Tadepalli are known for their vibrant festivals, colorful attire, and traditional dances, which are performed during celebrations and special occasions, showcasing their rich cultural legacy.



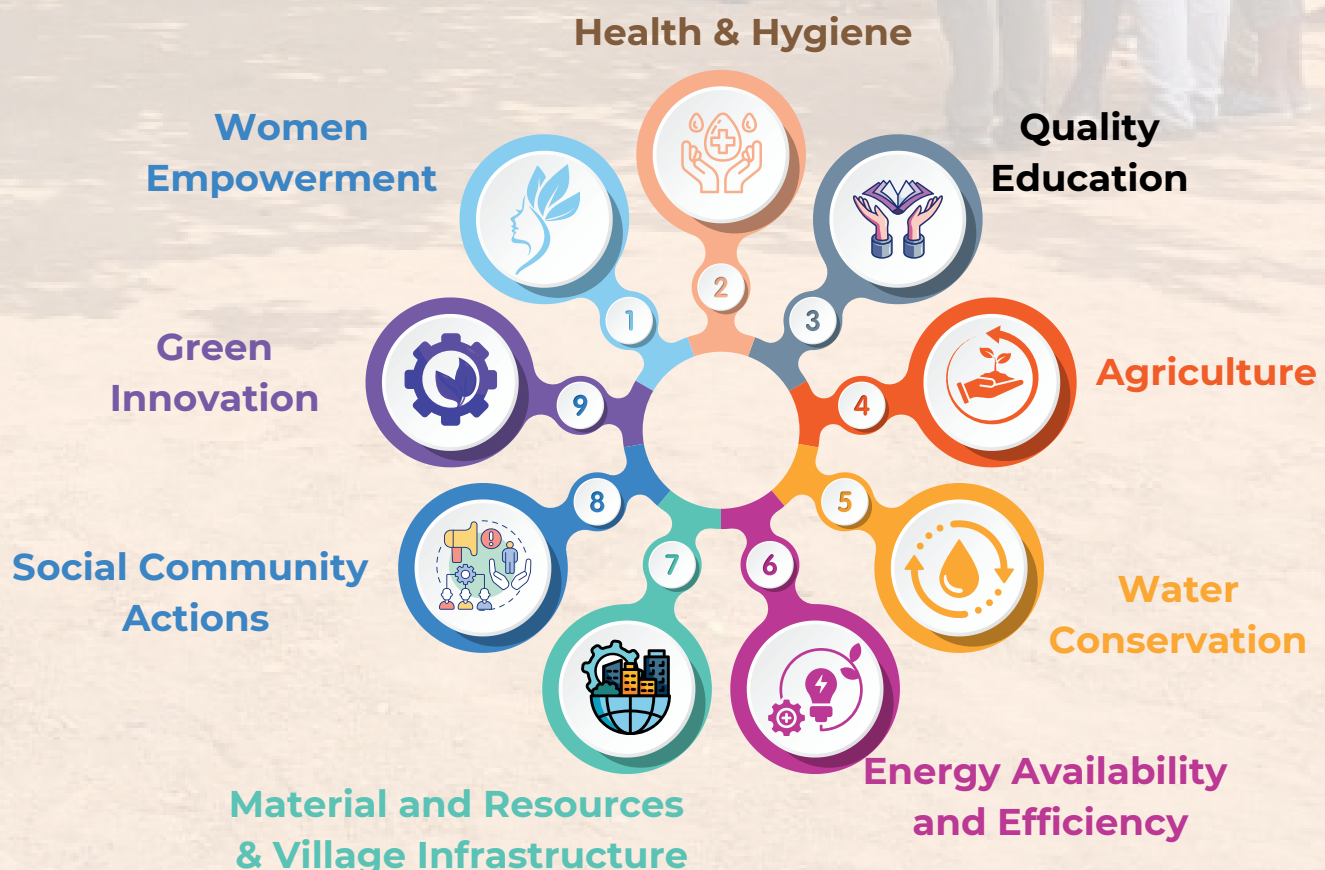
Tadepalli Mandal often involve rituals dedicated to nature and deities, reflecting their deep connection with the environment. Handcrafted jewelry, embroidery, and intricate beadwork are integral to their culture, symbolizing their artistic legacy. These traditions not only sustain their unique identity but also contribute to the cultural richness of Tadepalli Mandal. Efforts to preserve and celebrate these traditions have become a priority, ensuring their cultural significance is recognized and respected.

SMART VILLAGE REVOLUTION: TRANSFORMING RURAL DEVELOPMENT THROUGH INNOVATION AND SUSTAINABILITY

The Smart Village Revolution (SVR) project empowers students to lead research, develop innovative solutions, and promote rural development. Centered on sustainable progress, this initiative tackles key challenges through student-led projects across nine critical areas: Agriculture, Quality Education, Village Infrastructure, Water Conservation, Energy Efficiency and Availability, Materials and Resources, Social Community Actions, and Green Innovation. From improving water conservation to enhancing healthcare access, SVR supports rural communities with tailored solutions that seamlessly blend technology and tradition.

Students actively participate in research and practical implementation, driving transformative change and making a lasting societal impact. By aligning community needs with sustainable practices, the project bolsters rural resilience and improves the overall quality of life. Through collective efforts, this initiative envisions a model of growth and prosperity for rural areas.

The list of domains:



PILOT STUDY



Students play an integral role in conducting surveys to assess various aspects of community development within the Smart Village Revolution (SVR) project: Survey on Sanitation and Health Measures: Students conduct surveys to gauge the adoption of sanitation practices and healthy habits within the community.

By assessing the utilization of sanitation facilities and promoting healthy behaviors, students contribute to improving overall well-being. 1. Education Enrollment and Progress Survey: Students survey the enrollment of children in schools and monitor their educational progress.



Through this initiative, students gather data on school attendance and academic performance, enabling targeted interventions to support educational advancement. 2. Power Systems Assessment Survey: Students conduct surveys to evaluate the power systems utilized in households. By examining the methods of power generation and consumption, students gather valuable insights to inform initiatives aimed at promoting energy efficiency and sustainability.

HEALTH & HYGIENE

Setting up healthcare facilities with essential services and skilled professionals, combined with health education on hygiene and disease prevention, promotes community well-being. Providing access to clean water through purification systems and improved sanitation facilities enhances hygiene standards. Availability of essential medications and vaccines supports early detection and prevention through regular health screenings. Fitness programs and partnerships with local health workers encourage healthy lifestyles.



Healthcare Facilities and Skilled Professionals:

Establishing healthcare centers with skilled professionals ensures access to essential medical services for the residents. These facilities offer primary care, maternal and child health services, and emergency medical assistance.

Health Education and Awareness:

Community programs are organized to educate people on hygiene practices and disease prevention, encouraging healthier lifestyles and reducing the risk of communicable diseases.

Access to Clean Water and Sanitation:

Installation of water purification systems and improved sanitation facilities has significantly enhanced hygiene standards in the mandal. These efforts aim to prevent waterborne diseases and promote clean living conditions.

KL University has significantly contributed to enhancing health and hygiene in villages through various impactful health camps and awareness initiatives. These efforts include anemia awareness camps, educating villagers on its causes, prevention, and management. Blood grouping camps are organized to ensure individuals know their blood type, which is vital during emergencies.



Programs promoting hygienic behaviors educate communities on practices like regular handwashing and maintaining clean surroundings. Pilot studies help identify specific health issues prevalent in the villages, guiding targeted interventions. Awareness drives on safe disposal of used masks and general health and hygiene further equip villagers with essential knowledge to prevent diseases and maintain a healthy environment. These efforts have significantly improved health standards in rural areas, fostering a healthier and more informed community.

AGRICULTURE

Agriculture in Smart Villages like Srungarapuram and Vaddeswaram flourishes through the adoption of precision farming techniques. Leveraging technology, farmers use data-driven insights for efficient irrigation, fertilization, and pest control. Sustainable practices such as organic farming and renewable energy integration promote long-term environmental health. The focus is on providing access to advanced agricultural practices and tools, ensuring continuous growth and development in these villages.



Agriculture is a cornerstone of the economy and livelihoods in Tadepalli Mandal. It acts as the economic backbone of the region, supporting the rural economy and providing income for a significant portion of its residents. The cultivation of local crops ensures food security by making staple foods easily available and accessible to the community.

Agricultural sector in Tadepalli Mandal plays a crucial role as a primary source of livelihood, offering direct employment in farming and indirect opportunities in allied sectors like trade and agro-processing. Additionally, the region's traditional farming practices highlight its cultural heritage, reflecting the values and way of life of the local community.





Farmers in Tadepalli Mandal engage in agriculture that is well-suited to the local climate and soil conditions. Similar to other regions, crops like paddy, maize, and pulses are commonly grown. Additionally, some farmers diversify their production by cultivating horticultural crops such as vegetables, fruits, and flowers.

Livestock farming, along with poultry and dairy activities, plays an important role in supplementing agricultural income. Farmers in Tadepalli Mandal often combine traditional agricultural practices with modern techniques, including the use of advanced irrigation systems like drip and sprinkler irrigation, to optimize water usage and boost crop yields. These efforts significantly contribute to the agricultural and economic growth of the mandal.



QUALITY EDUCATION

Access to quality education is crucial in Smart Villages. Vaddeswaram High School utilizes digital learning tools, provides training for teachers, and is equipped with modern resources. This empowers the youth, encouraging innovation and preparing them for various career opportunities. Continuous training programs for educators align teaching methods with contemporary pedagogies, offering vocational training and specialized courses to ensure students are well-prepared for diverse career paths.



KL University's Smart Village Revolution is transforming education in Tadepalli Mandal through the digitalization of school education using advanced technology. By integrating smart classrooms equipped with interactive boards, e-learning platforms, and digital resources, students are provided with a modern and engaging learning environment. Teachers are trained to adopt innovative teaching methodologies, ensuring that education is inclusive and effective. The initiative also focuses on providing access to online libraries, virtual labs, and career-oriented digital courses to bridge the rural-urban educational divide. These efforts empower the students of Tadepalli Mandal, fostering creativity and critical thinking.

KL University conducted training sessions for teachers in Chirravuru village on innovative teaching methodologies and the use of technology in education delivery. These sessions were designed to equip educators with modern teaching techniques and tools to enhance the learning experience for students. Through hands-on workshops and interactive sessions, teachers were trained on effectively integrating technology into their lesson plans. They learned how to use educational software, digital resources, and multimedia materials to create engaging and interactive learning environments. By empowering teachers with these skills, KL University is ensuring that students in Chirravuru village receive a high-quality education that prepares them for success in the digital age.



Water Conservation

KL University is currently conducting workshops and awareness programs on rainwater harvesting techniques in Nutakki village to promote water conservation. These ongoing efforts aim to raise awareness within the community about the importance of preserving valuable water resources. Practical demonstrations and interactive sessions are being held to showcase the benefits and methods of rainwater harvesting. Participants are learning how to collect and store rainwater for various purposes, reducing dependency on limited water supplies. The initiative is actively fostering a culture of water conservation, with continued collaboration with local authorities and experts to ensure success and scalability.



The project emphasizes environmental sustainability through rainwater harvesting in Tadepalli Mandal and KLEF-SVR adopted villages. Plantation drives with geo-tagging have been conducted in villages like Kunchanapalli, Undavalli, and Penumaka to enhance greenery. Awareness camps promote open defecation-free practices in Neerukonda, Mandadam, and Krishnayapalem, fostering a cleaner and healthier environment in Tadepalli Mandal and surrounding areas.



Awareness camps promote open defecation-free practices in Tadepalli and Ippatam. These efforts aim to encourage community participation in adopting eco-friendly practices and enhancing the overall quality of life in the region.

Water conservation efforts within the Smart Village Revolution (SVR) are driven by active student participation in Revendrapadu village. Students play a key role in executing rainwater harvesting projects, preparing soak pits, and implementing micro-irrigation techniques to promote sustainable water management practices. Their hands-on involvement not only ensures the success of these initiatives but also instills a sense of ownership and responsibility toward conserving water resources in the community. Through their engagement, students become agents of positive change, leading impactful solutions for sustainable water conservation in Revendrapadu village.



Green Innovations

The Smart Village Revolution (SVR) initiative actively promotes environmental consciousness through impactful programs and campaigns focused on preserving natural resources and encouraging sustainable practices. Tree plantation drives with geo-tagging have been successfully conducted in Chirravuru and Chinnapalem villages, increasing green cover while allowing the tracking and monitoring of planted saplings for long-term growth.



Awareness programs in villages like Tadepalli emphasize the importance of reducing plastic usage and adopting sustainable waste management practices. Under the SVR initiative, these programs also focus on educating residents about the benefits of eco-friendly alternatives, such as composting and segregating waste at the source.

Tadepalli actively participates in celebrating World Ozone Day, using the occasion to raise awareness about the significance of protecting the ozone layer and promoting broader environmental conservation efforts. Villagers are encouraged to adopt green practices such as planting trees and minimizing the use of harmful chemicals that can deplete the ozone layer.



Rainwater harvesting and the promotion of eco-friendly toilets are being actively encouraged in rural areas like Vaddeswaram and Prathuru to conserve water and reduce waste. Campaigns focused on reducing chemical pesticide use and advocating for organic farming practices are being conducted, with the goal of safeguarding both soil health and the well-being of the community. Solar power projects, along with the promotion of energy-efficient cooking methods, are making significant progress in reducing carbon footprints while enhancing the quality of life in these rural villages.

The initiative also emphasizes the importance of maintaining clean water sources by educating villagers about proper sanitation and waste management, ensuring a healthier and more sustainable environment.



SOCIAL COMMUNITY ACTIONS



Ramachandrapuram village in Tadepalli Mandal focuses on holistic community development by addressing health, education, and social empowerment. Health camps and anemia awareness programs conducted in the village aim to enhance the well-being of residents by providing essential healthcare services and promoting awareness about preventive measures. Special deworming camps for children in Ramachandrapuram ensure improved hygiene and child health, contributing to a healthier future generation.

Education and creativity are nurtured through impactful outreach activities, such as art and craft sessions, painting workshops, and writing skills programs. These initiatives empower rural youth to explore their creative potential and emphasize the importance of education in shaping their future. Awareness programs on the significance of education in nearby villages also promote literacy and encourage school attendance, especially for girl students. Competitions and interactive events foster teamwork and community participation, strengthening social bonds within the village.



To empower the community, the SVR initiative conducts skill development programs in Nutakki village, such as tailoring and handicraft workshops, creating opportunities for women to achieve economic independence. Financial literacy programs are also organized to equip rural families with the knowledge to manage their resources effectively, ensuring sustainable livelihoods and long-term financial stability.



SMART VILLAGE REVOLUTION

"India lives in its villages," a statement attributed to Mahatma Gandhi, underscores the essential role villages play as the backbone of India's economy, culture, and society. Gandhi envisioned a nation where rural areas thrived through self-sufficiency, equitable opportunities, and sustainable development. This vision aligns seamlessly with the concept of the **Smart Village Revolution**, which seeks to bridge the gap between rural and urban areas by integrating technology, infrastructure, and innovation into traditional village systems.

Smart Village Revolution initiative aims to transform rural life by providing access to quality education, healthcare, digital connectivity, renewable energy, and sustainable farming practices. By leveraging modern tools and empowering rural communities, this movement fosters inclusive growth, ensuring villages are not only self-reliant but also contributors to India's overall progress.

