

Differently abled (Divyangjan) Friendliness Resources available in Campus

Our organization is dedicated to creating a friendly and accessible workplace for individuals with disabilities. Campus acknowledges that each person has specific requirements, and it is our purpose to offer specialized support and resources to enable people with disabilities to succeed in all facets of life.

In order to ensure that every individual in the campus community has an equitable opportunity to accomplish their academic, professional, and personal objectives, our committed team of experts is here to provide guidance and assistance. Regardless of whether one is a student, faculty member, or part of the staff, we are here to work with you in advocating for accessibility and establishing appropriate modifications throughout the campus.



Fig: Office of Disability Welfare Assistance



List of Members to Disability Welfare Assistance

Sno	Name of Member	University Designations
1	Dr. V. Rajesh	Dean P&D
2	Dr. V. Srikanth	Dean F&SA
3	Dr. Ch. Hanumanth Rao	Dean Student Affairs
4	Dr. P. Gopikrishna	Associate Professor, ECM/IoT
5	Mr. P. Sreekanth Reddy	Assistant Professor, ECE
6	Dr. P. Yellamma	Associate Professor, CSE
7	Dr.P. Sailaja	Associate Professor, LAW
8	Dr.G. Sumati	Assistant Professor, V.E.C

The facilities available on Campus which is easily accessible by people with disabilities.

- 1) Physical facilities
- 2) Provision for lift
- 3) Ramp / Rails
- 4) Braille Software/facilities
- 5) Rest Rooms
- 6) Scribes for examination
- 7) Special skill development for differently abled students

1. Physical facilities



AMBULANCE



BATTERY VEHICLE



BATTER OPERATED WHEEL CHAIR



BATTER OPERATED WHEEL CHAIR



WHEEL CHAIR



STUDY CHAIR



Koneru Lakshmaiah Education Foundation

(Deemed to be University estd. u/s. 3 of the UGC Act, 1956)

Accredited by NAAC as 'A++' Grade University Approved by AICTE ISO 9001-2015 Certified

Campus: Green Fields, Vaddeswaram - 522 502, Guntur District, Andhra Pradesh, INDIA.

Phone No. 0863 - 2399999; www.klef.ac.in; www.klef.edu.in; www.kluniversity.in

Admin Off: 29-36-38, Museum Road, Governorpet, Vijayawada - 520 002. Ph: +91 - 866 -2577715, Fax: +91-866-2577717.



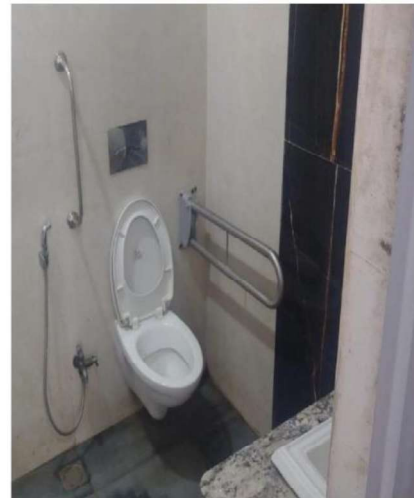
STRETCHER



DEDICATED PARKING SPACE



TWO WHEELER PARKING SPACE



PH TOILETS

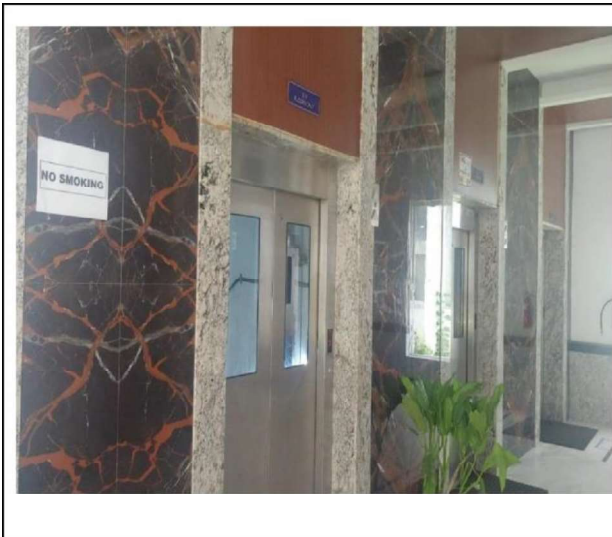
2. Provision for lift



CSE BLOCK LEFT SIDE ENTRY LIFT PROVISION



CSE BLOCK RIGHT SIDE ENTRY LIFT PROVISION



R-BLOCK LIFT PROVISION



LIFT PROVISION WITH RAILINGS

3. Ramp / Rails



Digital Library Entrance



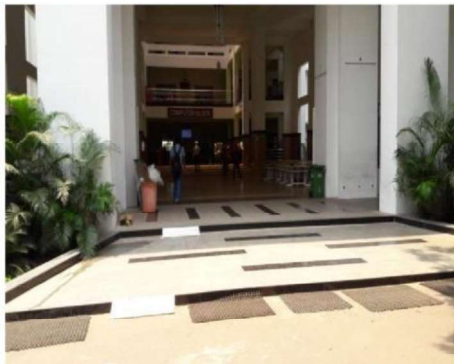
EEE Block Entrance



Digital Library Back Side



CSE-Block Lobby



CSE-Block Entrance



FED Block Entrance



Koneru Lakshmaiah Education Foundation

(Deemed to be University estd. u/s. 3 of the UGC Act, 1956)

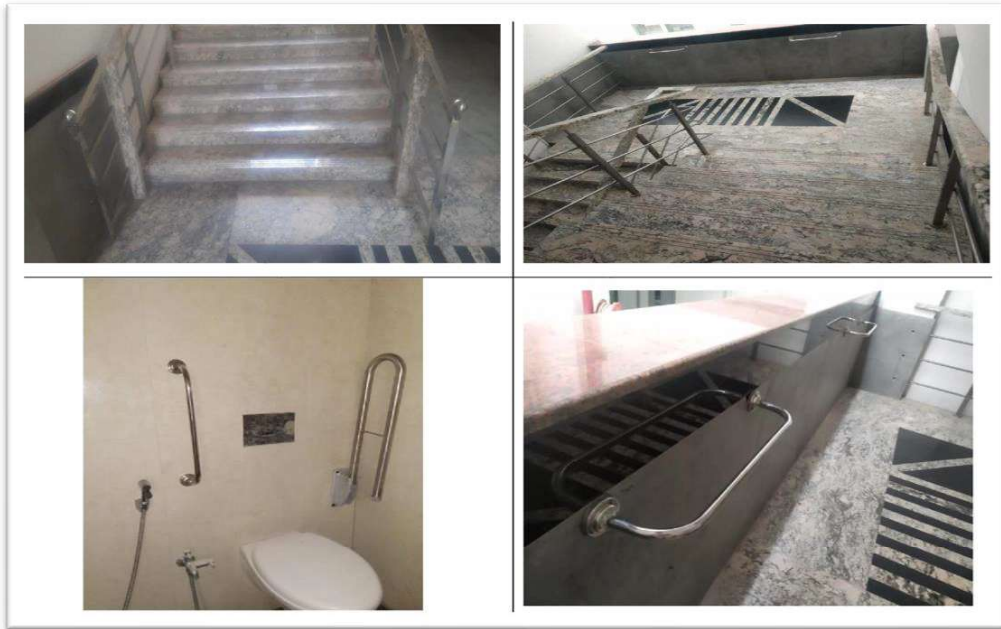
Accredited by NAAC as 'A++' Grade University Approved by AICTE ISO 9001-2015 Certified

Campus: Green Fields, Vaddeswaram - 522 502, Guntur District, Andhra Pradesh, INDIA.

Phone No. 0863 - 2399999; www.klef.ac.in; www.klef.edu.in; www.kluniversity.in

Admin Off: 29-36-38, Museum Road, Governorpet, Vijayawada - 520 002. Ph: +91 - 866 -2577715, Fax: +91-866-2577717.

RAILING FACILITY:



CENTRAL LIBRARY BLOCK LIFT
AND RAILING FACILITY

CENTRAL RESEARCH BLOCK LIFT
AND RAILING FACILITY

4. Braille Software/facilities

CATEGORIES OF STUDENTS WITH DISABILITIES:

Students of schools/colleges/universities May experience a variety of different categories of disabilities; they include but are not limited to:

- (1) Deaf/hearing impairments
- (2) Learning disabilities
- (3) Physical disabilities
- (4) Psychological/neurological disorders
- (5) Speech or language impairments
- (6) Visual impairments
- (7) Cognitive impairments

Software systems for students with disabilities. Software systems allow students with disabilities equal access in the classroom and learning environments. Often these systems also help them learn more efficiently and effectively and in many cases allow them to interact better with their professor and classmates. Where traditional classrooms do not specifically address software systems and how students with disabilities could be impacted, the implementation of specific advanced software systems in SmU and learning environments would definitely approach learning barriers from the perspective of universal accessibility: providing greater learning opportunities for all students in the SmU classroom—including students with disabilities.

#	Software system	Technical platform	Cost	Category of students served
1	Kurzweil Reading	Windows/Mac	–	3, 5, 6, 7
2	CAR (Central Access Reader)	Windows/Mac	Free	3, 5, 6, 7
3	Inspiration	Windows/Mac 5	V9.2—\$40; bundle pack — \$60; household—\$9	3, 5, 7
4	Jaws	Windows	Pro—\$1,100; home—\$900; 90-day trail—\$180	7
5	Firefox Add on “Text to voice”	Windows/Mac/ Linux	Free	3, 6
6	Dragon Naturally	Windows/Mac	\$75	2, 3, 4, 7
7	Zoom text	Windows	\$600	7



Open source (free) systems

1	Balabolka	Balabolka	Windows/Mac
2	Text-to-Speech Reader	Speech Logger	Windows/Linux/Mac
3	Text-to-Speech (TTS)	Poon Family	Windows
4	Microsoft Word TTS	Microsoft	Windows/Mac
5	ClipSpeak	Code Plex	Windows/Mac
6	WordTalk	WordTalk	Windows
7	Imtranslator	Smart Link	Windows/Linux
8	iSpeech	Apple	Mac
9	Google Translate	Google	Windows/Linux/Mac
10	Power Talk	Atis4all	Windows/Linux