



Koneru Lakshmaiah Education Foundation

(Category -1, Deemed to be University estd. u/s. 3 of the UGC Act, 1956)

Accredited by NAAC as 'A++' ♦ Approved by AICTE ♦ ISO 21001:2018 Certified

Campus: Green Fields, Vaddeswaram - 522 302, Guntur District, Andhra Pradesh, INDIA.

Phone No. +91 8645 - 350 200; www.klef.ac.in; www.klef.edu.in; www.kluniversity.in

Admin Off: 29-36-38, Museum Road, Governorpet, Vijayawada - 520 002. Ph: +91 - 866 - 3500122, 2576129

1. Built environment with ramps/lifts for easy access to classrooms.

Ramp / Lifts



Digital Library Entrance
(Sensor based Library Doors)



EEE Block Entrance



Digital Library Back Side



CSE-Block Lobby

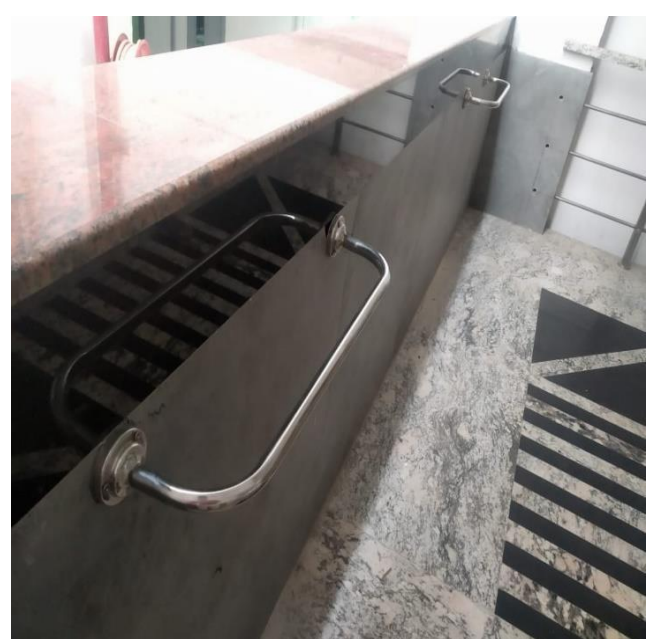


CSE-Block Entrance



FED Block Entrance

RAILING FACILITY:





CENTRAL LIBRARY BLOCK LIFT RAILING FACILITY(SENSOR BASED LIFT DOORS)



CENTRAL RESEARCH BLOCK LIFT RAILING FACILITY(SENSOR BASED LIFT DOORS)

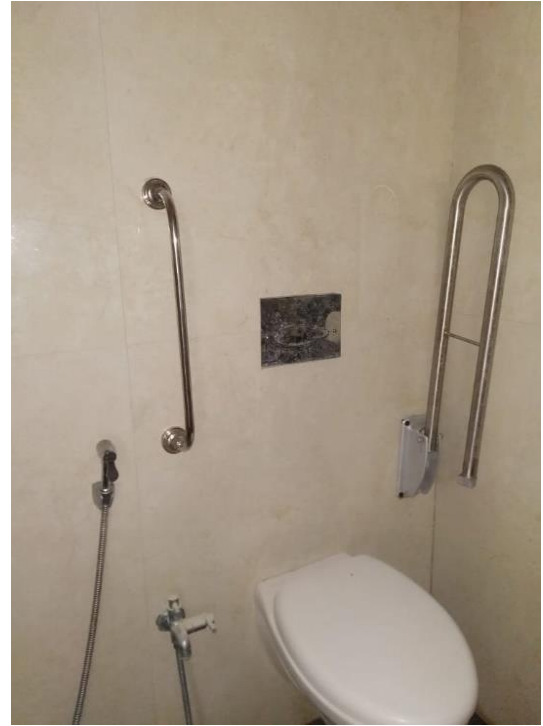


R-BLOCK LIFT PROVISION (SENSOR BASED LIFT DOORS)

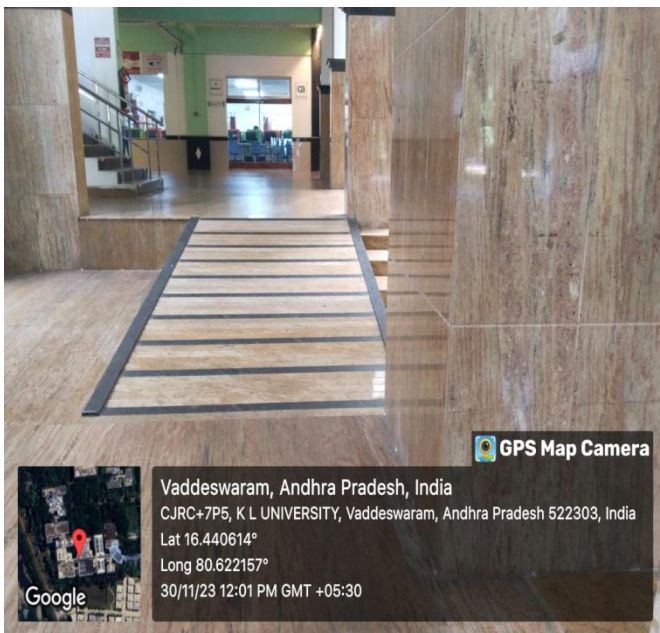


LIFT PROVISION WITH RAILINGS

2. Divyangjan friendly washrooms



3. Signage including tactile path, lights, display boards and signposts



4. Assistive technology and facilities for Divyangjan accessible website, screen-reading software, mechanized equipment

Braille Software/facilities

CATEGORIES OF STUDENTS WITH DISABILITIES: Students of schools/colleges/universities may experience a variety of different categories of disabilities; they include but are not limited to:

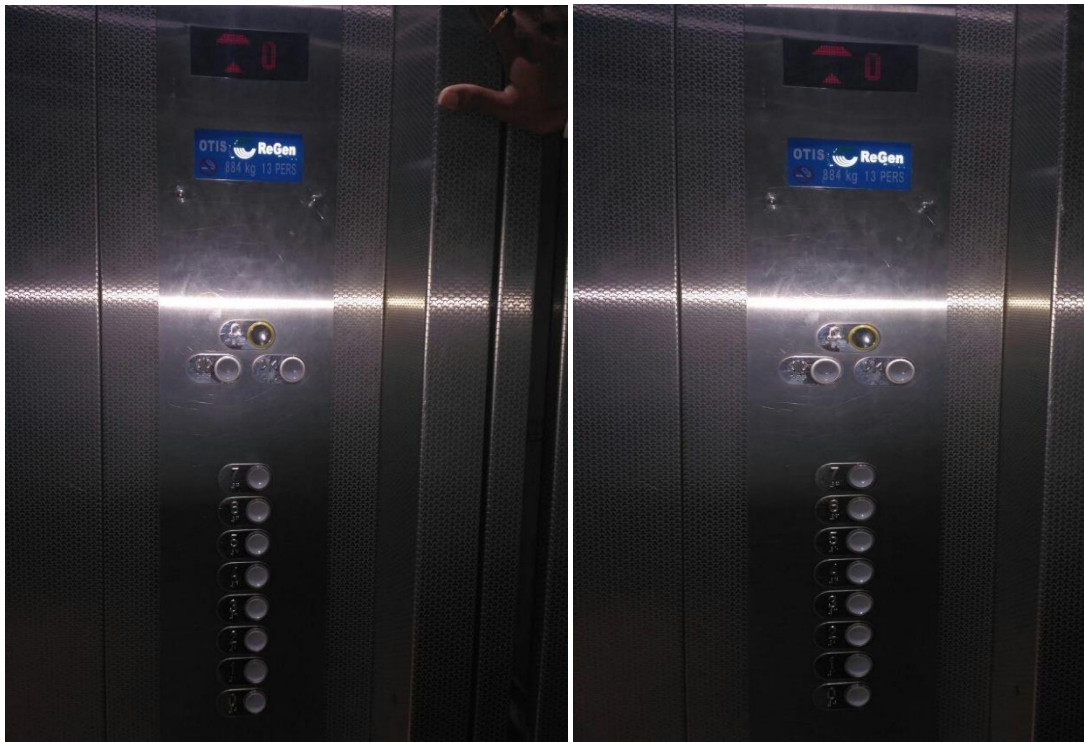
- (1) Deaf/hearing impairments
- (2) Learning disabilities
- (3) Physical disabilities
- (4) Psychological/neurological disorders
- (5) Speech or language impairments
- (6) Visual impairments
- (7) Cognitive impairments

Software systems for students with disabilities. Software systems allow students with disabilities equal access in the classroom and learning environments. Often these systems also help them learn more efficiently and effectively and in many cases allow them to interact better with their professor and classmates. Where traditional classrooms do not specifically address software systems and how students with disabilities could be impacted, the implementation of specific advanced software systems in SmU and learning environments would definitely approach learning barriers from the perspective of universal accessibility: providing greater learning opportunities for all students in the SmU classroom—including students with disabilities.

S.No	Software system	Technical platform	Cost	Category of students served
1	Kurzweil Reading Edge	Windows/Mac	–	3, 5, 6, 7
2	CAR (Central Access Reader)	Windows/Mac	Free	3, 5, 6, 7
3	Inspiration	Windows/Mac 5	V9.2—\$40; bundle pack — \$60; household—\$9	3, 5, 7
4	Jaws	Windows	Pro—\$1,100; home—\$900; 90-day trail—\$180	7
5	Firefox Add on “Text to voice”	Windows/Mac/Linux	Free	3, 6
6	Dragon Naturally speaking	Windows/Mac	\$75	2, 3, 4, 7
7	Zoom text	Windows	\$600	7

Open source (free) systems

1	Balabolka	Balabolka	Windows/Mac
2	Text-to-Speech Reader	Speech Logger	Windows/Linux/Mac
3	Text-to-Speech (TTS)	Poon Family	Windows
4	Microsoft Word TTS	Microsoft	Windows/Mac
5	ClipSpeak	Code Plex	Windows/Mac
6	WordTalk	WordTalk	Windows
7	Imtranslator	Smart Link	Windows/Linux
8	iSpeech	Apple	Mac
9	Google Translate	Google	Windows/Linux/Mac
10	Power Talk	Atis4all	Windows/Linux



5. Provision for enquiry and information: Human assistance, reader, scribe, soft copies of reading material, screen reading, font enlargement etc



STRETCHER



AMBULANCE



BATTERY VEHICLE



BATTERY OPERATED WHEEL CHAIR



BATTERY OPERATED WHEEL CHAIR



WHEEL CHAIR



STUDY CHAIR